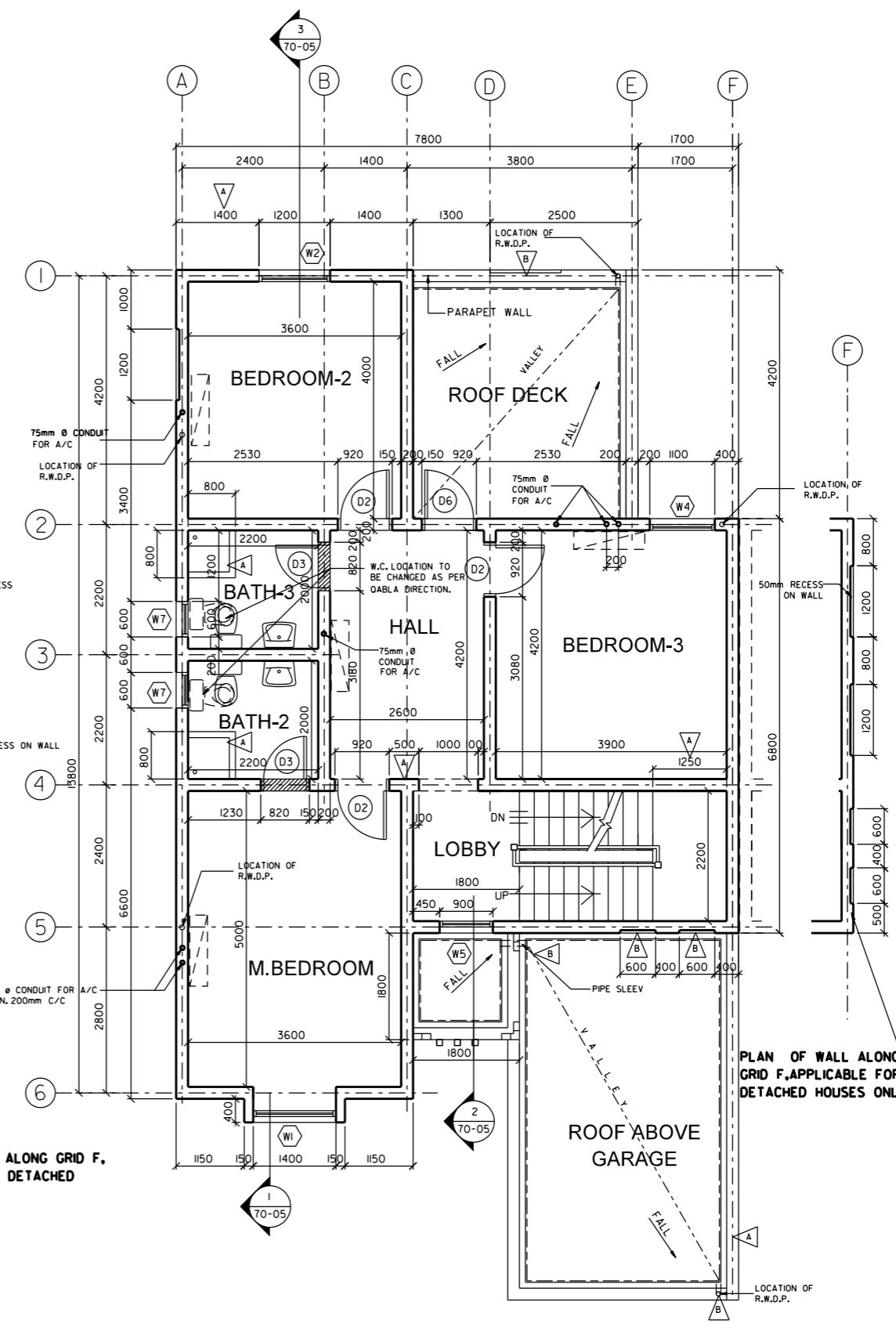
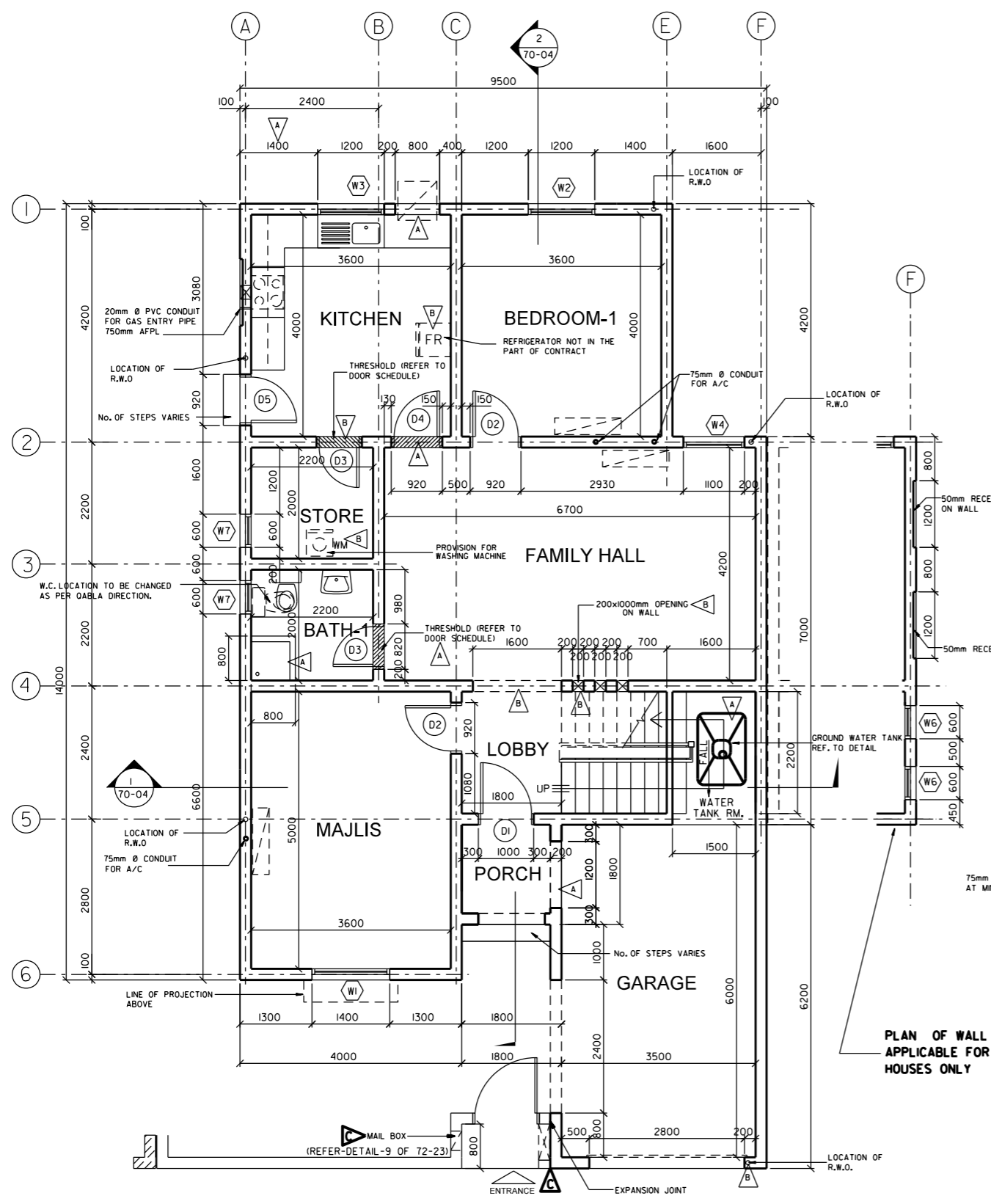


NOTES

- ALL WORKS, COMPONENTS, SETTING OUT, LEVELS, MATERIALS AND FINISHES ARE TO BE INSPECTED AND APPROVED BY ENGINEER PRIOR TO COMMENCEMENT AND INSTALLATION.
- ANY DISCREPANCIES BETWEEN CONTRACT DRAWINGS AND/OR DOCUMENTS ARE TO BE BROUGHT UP TO THE ATTENTION OF THE ENGINEER AT ONCE.
- DO NOT SCALE FROM DRAWINGS.
- ALL DIMENSIONS ARE IN MILLIMETERS UNLESS STATED OTHERWISE.
- THIS DRAWING IS TO BE READ WITH ALL RELATED ARCHITECTS AND ENGINEERS DRAWINGS AND OTHER RELATED INFORMATION.
- ALL EXTERNAL WALLS TO BE OF APPROVED LOAD BEARING INSULATED BLOCKS



PLAN OF WALL ALONG GRID F, APPLICABLE FOR DETACHED HOUSES ONLY

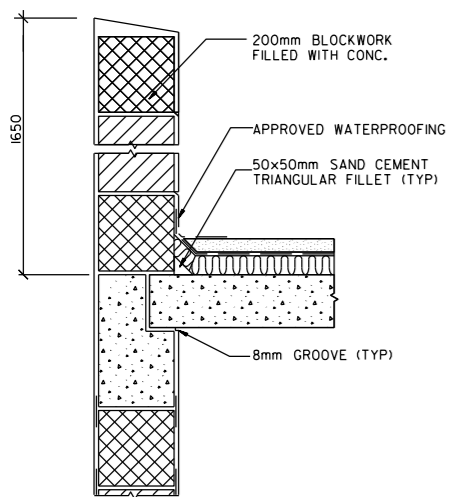
PLAN OF WALL ALONG GRID F, APPLICABLE FOR DETACHED HOUSES ONLY

MAR. 2015	REVISED ENTRANCE (ADDED EXPANSION-JOINT & MAIL BOX)	E
FEB. 2014	RELOCATED RAIN WATER PIPE OF GARAGE, ADD THRESHOLD IN STORE, RELOCATED WASHING MACHINE FROM STAIRCASE LANDING TO THE STORE, RECESS ADDED TO MATCH ELEVATION, RELOCATED REFRIGERATOR & STORE DOOR	B
SEPT. 2012	REVISED AS SHOWN IN THE DRAWING	A
APRIL 2012	ISSUED FOR LUMP SUM CONTRACT	
APP'D/DATE	REVISIONS	

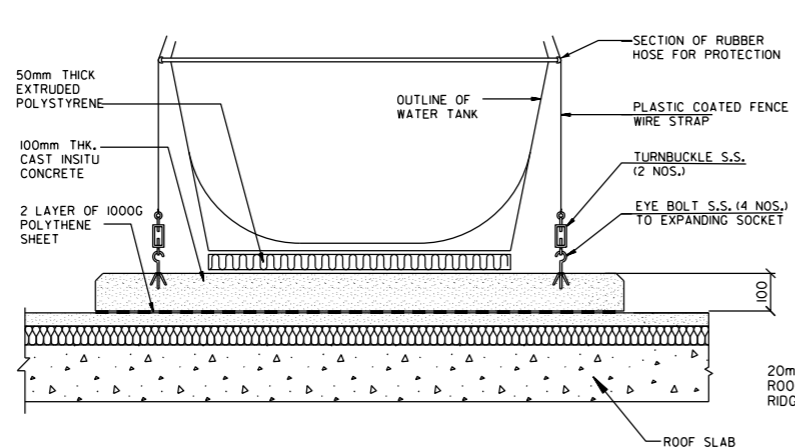


إدارة تخطيط وتصميم المشاريع السكنية
HOUSING PROJECTS PLANNING & DESIGN DIRECTORATE

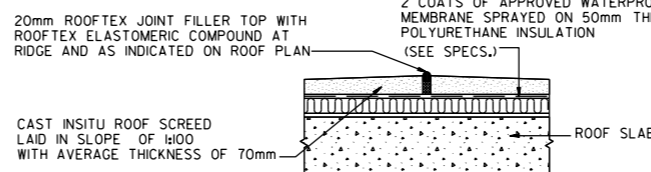
PROJECT NAME	HOUSE TYPE T8		
DRAWING TITLE	عنوان الرسمة GROUND AND FIRST FLOOR PLAN		
DESIGNED	المصمم	HEAD, ARCHITECTURAL DESIGN	
CHECKED	المراجع	NARMEEN KHALID AYOUB	
DRAWN/CAD	الرسم	ADDEL BN RAJAB	
SCALE	مقياس الرسم	DATE	التاريخ
1:100		APRIL, 2012	
DRAWING NUMBER	رقم الرسم	REVISION	
T8 - 70 - 01		C	



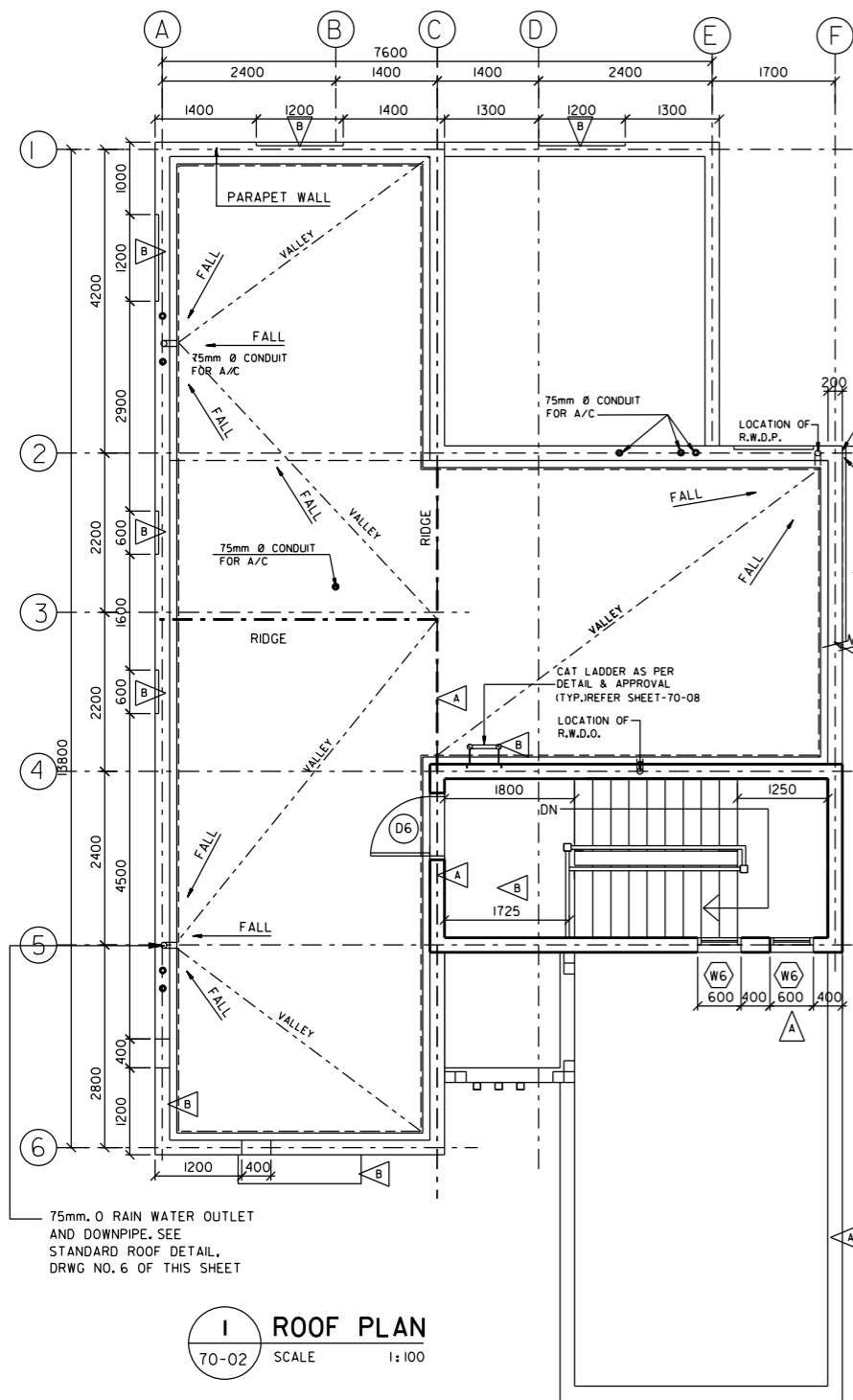
3 SECTION - PARAPET WALL
70-02 SCALE 1:20



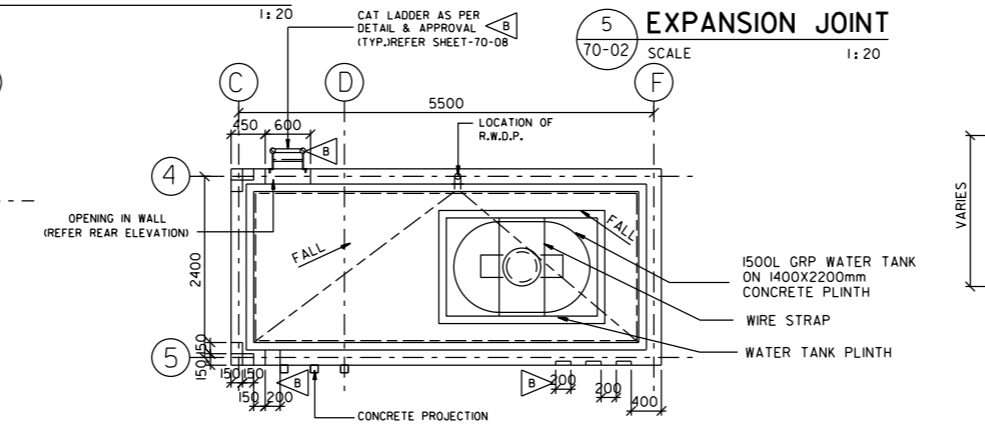
4 SECTION - WATER TANK PLINTH
70-02 SCALE 1:20



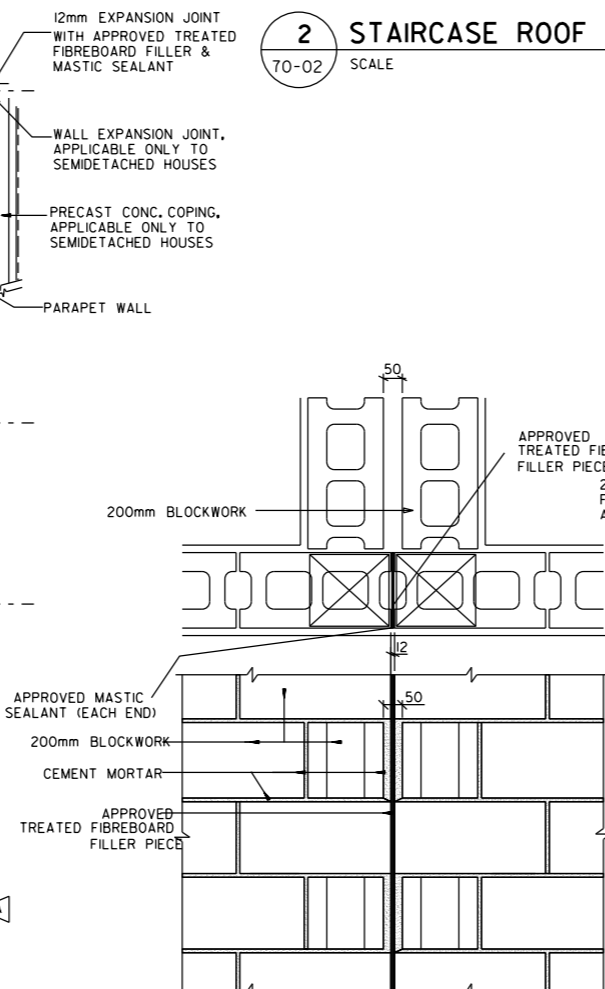
5 EXPANSION JOINT
70-02 SCALE 1:20



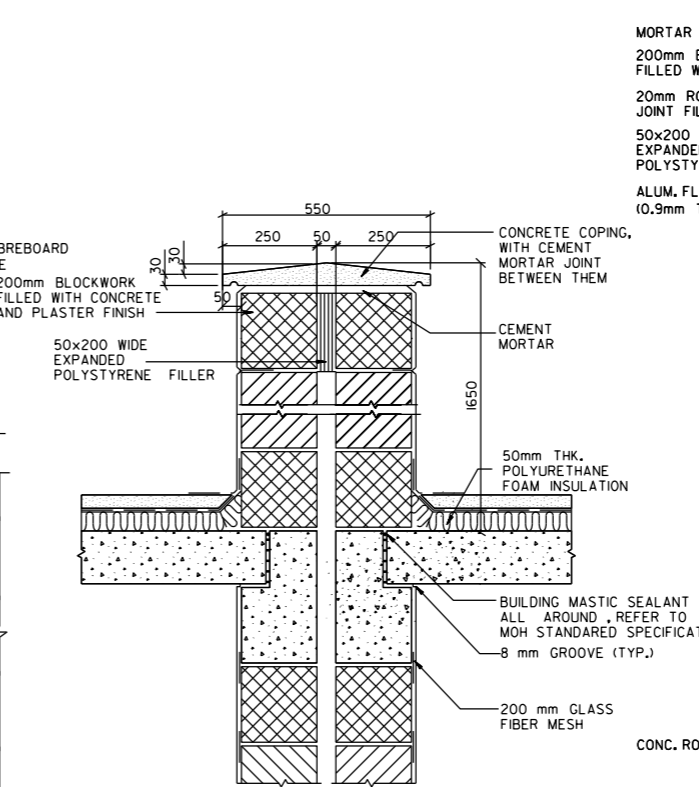
1 ROOF PLAN
70-02 SCALE 1:100



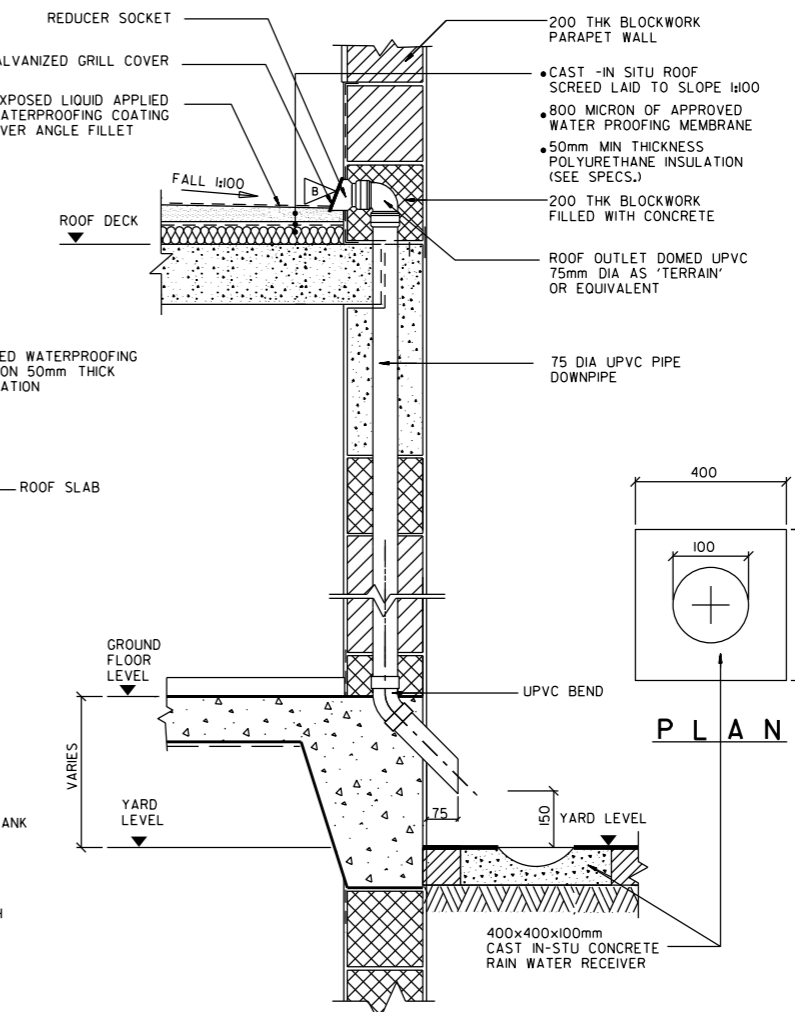
2 STAIRCASE ROOF PLAN
70-02 SCALE 1:100



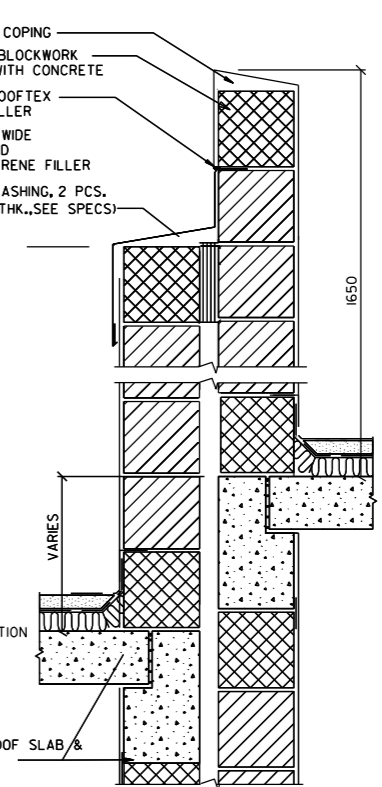
7 PLAN - ELEVATION EXP. JOINT (BETWEEN 2 UNITS)
70-02 SCALE 1:20



8 P.C. COPING BETWEEN TWO HOUSES
70-02 SCALE 1:20



6 SECTION THRO' RAIN WATER PIPE AND RECEIVER
70-02 SCALE 1:20



9 DETAIL FOR STEPPED SEMI DETACHED
70-02 SCALE 1:100

NOTES

FOR TYPICAL NOTES REFER TO DRAWING NO. T8-70-01

FEB. 2014
RELOCATED WASHING MACHINE FROM STAIRCASE LANDING TO THE STORE, REVISED PARAPET WALL ADDED GALVANIZED GRILL COVER & REDUCER SOCKET FOR RAIN WATER PIPE AT ROOF & GALVANIZED STEEL LADDER AT ROOF LEVEL ADDED

SEPT. 2012
STAIRCASE WALL SHIFTTED FROM GRID D TO C IN ADDITION TO CHANGES AS MARKED IN THE DRAWING.

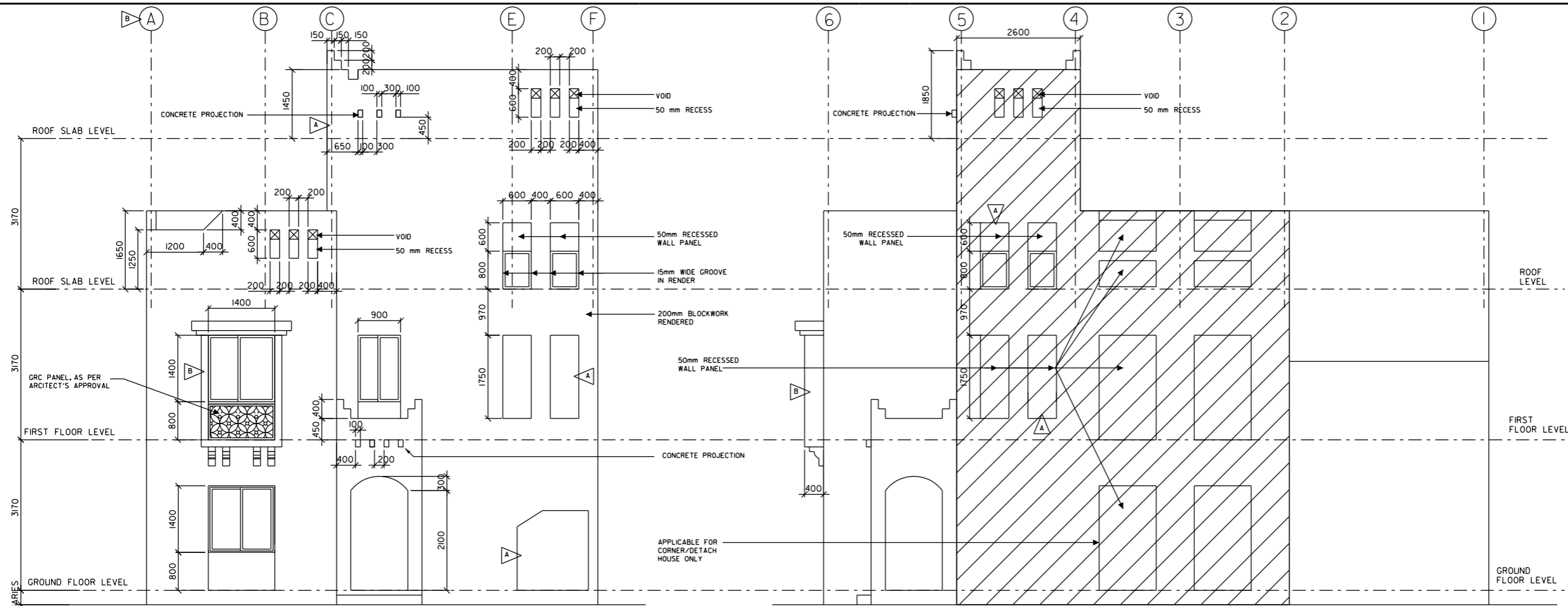
APRIL 2012	ISSUED FOR LUMP SUM CONTRACT
APP'D/DATE	REVISIONS

مملكة البحرين
 وزارة الإسكان
 KINGDOM OF BAHRAIN
 MINISTRY OF HOUSING

إدارة تخطيط وتصميم المشاريع الإسكانية
 HOUSING PROJECTS PLANNING & DESIGN DIRECTORATE

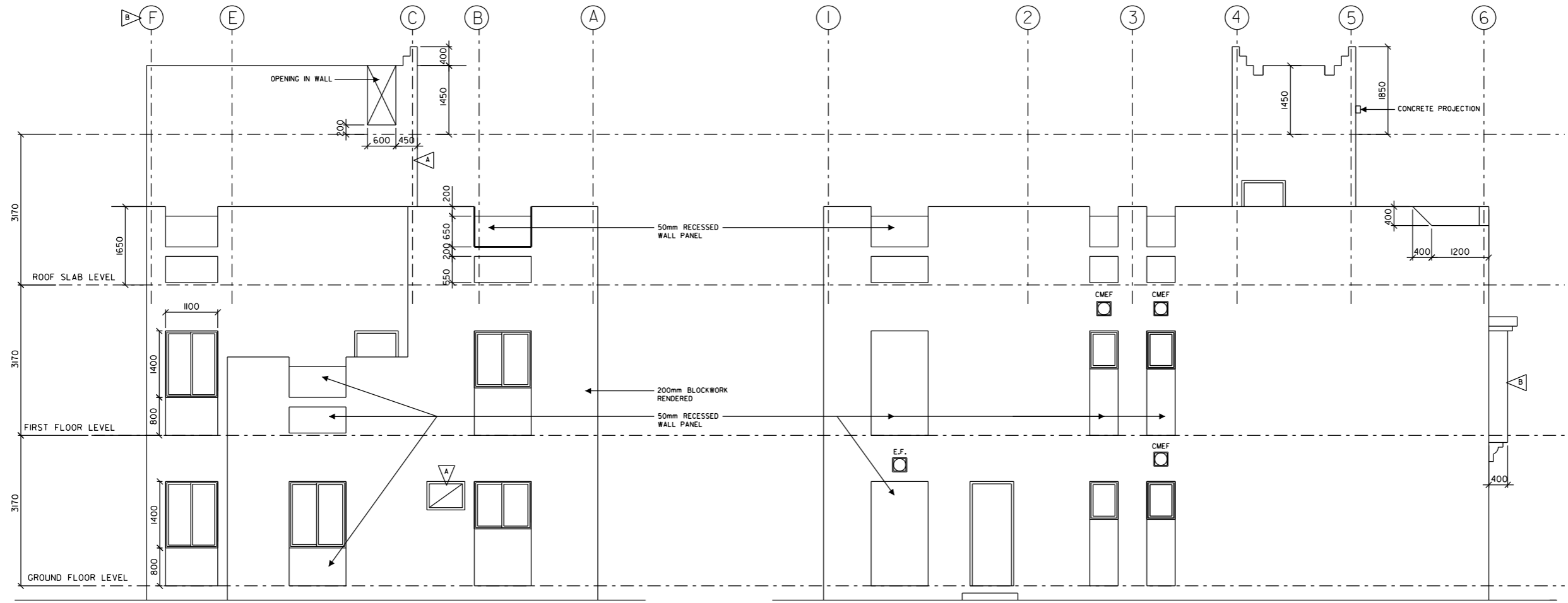
PROJECT NAME: **HOUSE TYPE T8**
 DRAWING TITLE: **ROOF PLAN AND DETAILS**

DESIGNED: PNV	HEAD, ARCHITECTURAL DESIGN
CHECKED: NARMEEN	NARMEEN KHALID AYOUB
DRAWN/CAD: ALI/GEORGE	رئيس التصميم
SCALE: T8 - 70 - 02	DATE: APRIL, 2012
DRAWING NUMBER: T8 - 70 - 02	REVISION: B



1 FRONT ELEVATION
70-03 SCALE 1:100

2 RIGHT SIDE ELEVATION
70-03 SCALE 1:100



3 REAR ELEVATION
70-03 SCALE 1:100

4 LEFT SIDE ELEVATION
70-03 SCALE 1:100

NOTES

1. FOR TYPICAL NOTES REFER TO DRAWING No.T8/ZL08-70-01

ABBREVIATIONS:
E.F. - EXHAUST FAN
CMEF - CEILING MOUNTED EXTRACT FAN (LOCATED UNDER SIDE OF RING BEAM)

FEB. 2014	FIRST FLOOR WINDOW/WHI LOCATION ADJUSTED & GRID LINE ADDED	B
SEPT. 2012	REVISED AS SHOWN IN THE DRAWING	A

APRIL 2012 ISSUED FOR LUMP SUM CONTRACT

APP'D/DATE	REVISIONS
------------	-----------



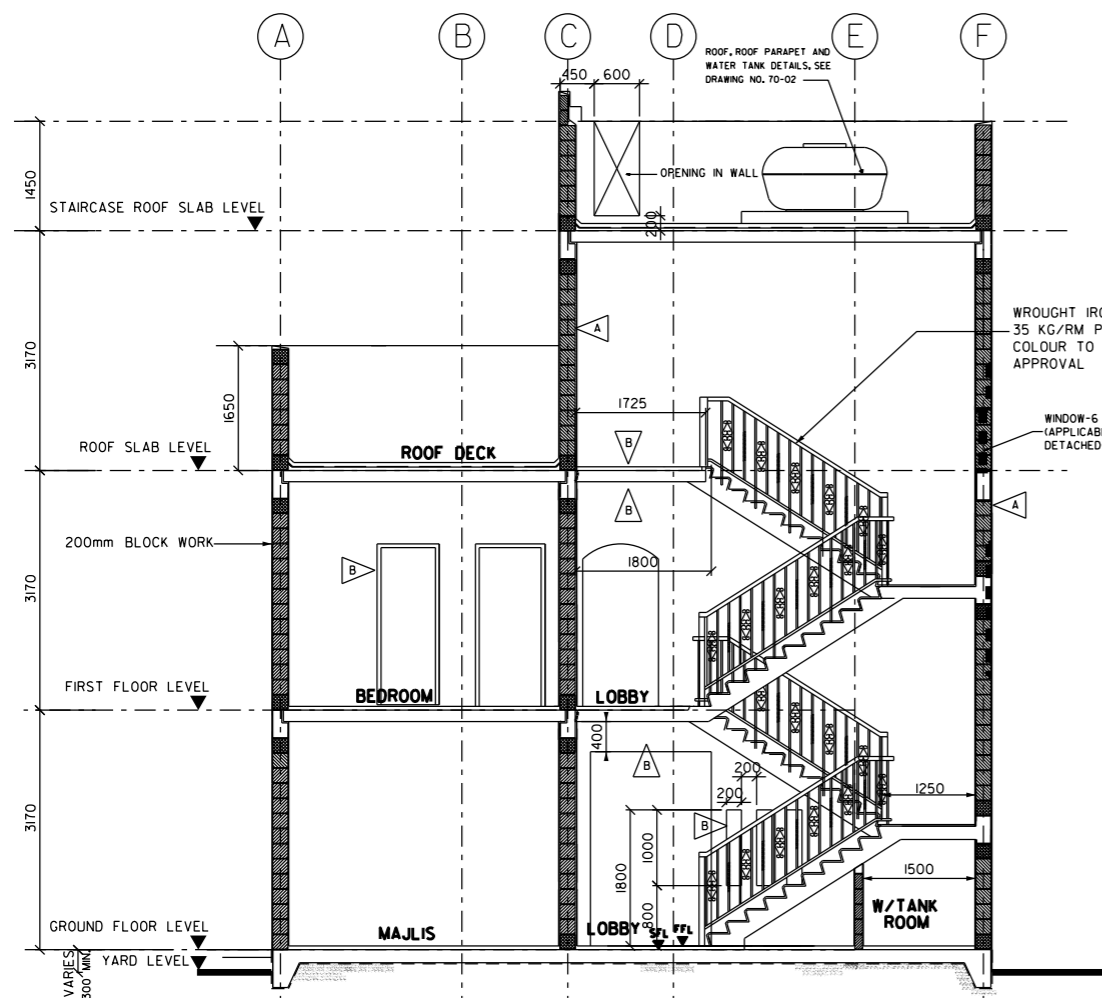
إدارة تخطيط وتصميم المشاريع الإسكانية
HOUSING PROJECTS PLANNING & DESIGN DIRECTORATE

PROJECT NAME
HOUSE TYPE T8

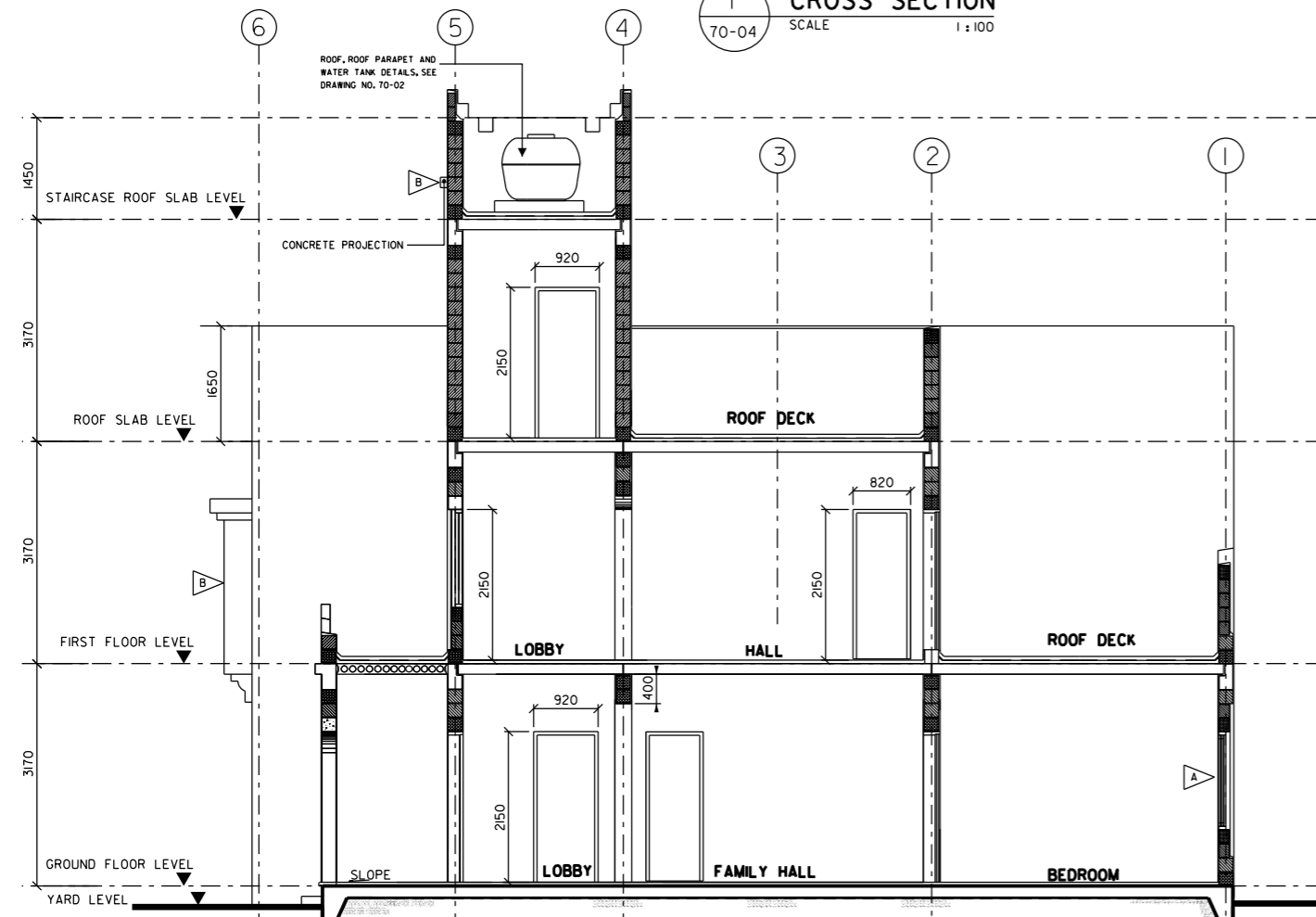
DRAWING TITLE
عنوان الرسمة
ELEVATIONS

DESIGNED PNV	المصمم	HEAD, ARCHITECTURAL DESIGN
CHECKED NARMEEN	المراجع	NARMEEN KHALID AYOUB
DRAWN/CAD ALI/GEORGE	الرسم	ADEL BIN RAJAB

SCALE 1:100	مقياس الرسم	DATE APRIL - 2012	التاريخ
DRAWING NUMBER T8-70 - 03	رقم الرسم	REVISION B	



1 CROSS SECTION
70-04 SCALE 1:100

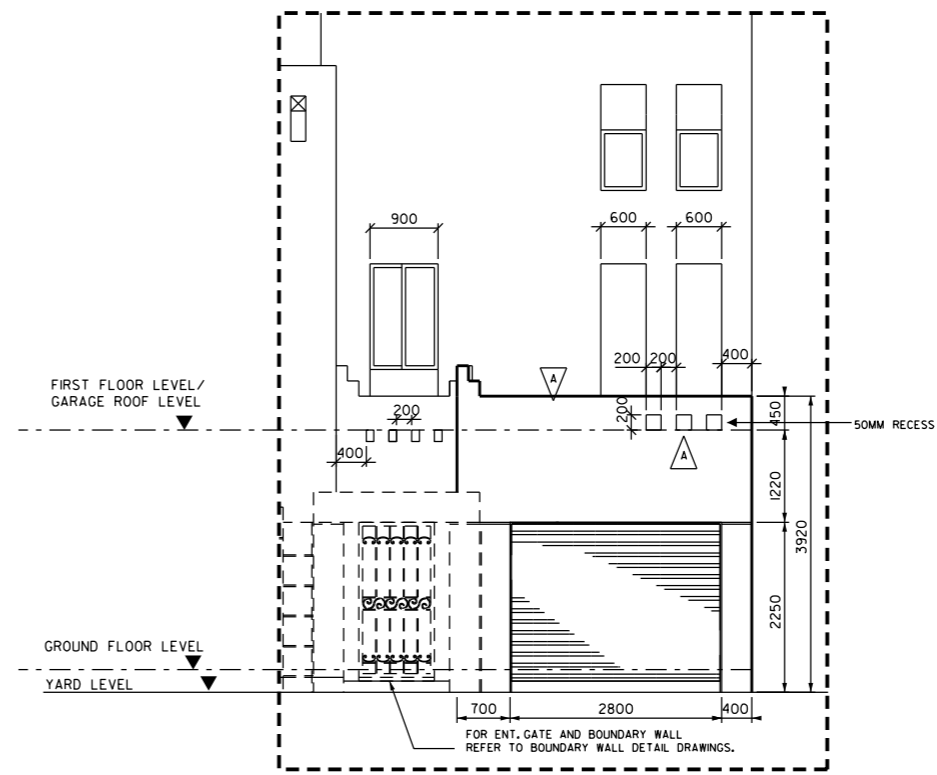


2 LONGITUDINAL SECTION
70-04 SCALE 1:100

FINISHING SCHEDULE

ROOM NAME	FLOOR										SKIRTING		WALL		CEILING	OTHERS	REMARKS
											INTERNAL	EXTERNAL					
	REINF. CONC. FLOOR SLAB WOOD TROWELLED FIN.	400X400X9.5mm NON-SLIP PORCELAIN TILES	200X200X7.5mm UNGLAZED CERAMIC TILES	FAIR FACED CONCRETE FINISH	13mm THK NON-SLIP PORCELAIN TILES	300X300 OR 400X400mm NON-SLIP CERAMIC TILES	ROOF CONC. SCREED TO FALL MIN. 50mm THICK	200X100 CERAMIC SKIRTING TILES	400X100mm NON-SLIP PORCELAIN TILES	200X200X5.5mm GLAZED CERAMIC TILES			12mm PLASTER AND 2 COATS OF VINYL EMULSION PAINT FINISH	200X200X5.5 GLAZED CERAMIC TILES IN ACCORDANCE WITH DESIGN SPECIFICATION ON ALL WALLS AT AGREED HEIGHT.			
GROUND FLOOR																	
CARPORT																	
MAJLIS																	
FAMILY HALL																	
BATH - 1																	GLAZED TILES (UP TO FALSE CEILING) B
KITCHEN																	GLAZED TILES (FULL HEIGHT)
STORE																	
LOBBY																	
BEDROOM - 1																	
STAIRCASE																	TILES OF STAIRCASE TO BE ONE FULL PIECE WITH 3 NOS. GROOVE STEPS TILES TO BE PROVIDED WITH 3 NOS. GROOVES
PORCH WITH STEPS																	
WATER TANK ROOM																	PROVIDE WATER PROOFING
FIRST FLOOR																	
M.BEDROOM																	
BEDROOMS 2&3																	
LOBBY																	
BATHS 2/3																	GLAZED TILES (UP TO FALSE CEILING) B
HALL																	
ALL ROOF DECKS																	
EXTERIOR WALL																	

3 FINISHING SCHEDULE
70-04



4 PART ELEVATION OF GARAGE
70-04 SCALE 1:100

NOTES

- NOTES :
- FOR TYPICAL NOTES REFER TO DRAWING NO. T8 -70-01
 - FOR FURTHER INFORMATION REFER TO SPECIFICATIONS.
 - ALL MATERIALS TO BE SUPPLIED SHALL BE IN ACCORDANCE WITH SPECIFICATIONS AND MANUFACTURERS INSTRUCTION AS APPROVED BY ARCHITECT.
 - ALL PRECAST CONCRETE SLAB SOFFIT SURFACES MUST BE SUITABLE TO RECEIVE PAINT.
 - FOR TYPE AND COLOUR SHADE OF ALL FINISHES TO BE APPROVED BY ARCHITECT.
 - ALL FINISHING MATERIAL SHALL BE REVIEWED BY ARCHITECT PRIOR TO FINAL APPROVAL.

AUG. 2014	STORE FLOOR TILES REVISED SAME AS KITCHEN FLOOR TILES.	C
FEB. 2014	800x800x50mm DROP SLAB, CANCELLED FROM THE STAIRCASE LANDING & FALSE CEILING OMITTED. WALL WITH OPENINGS ADDED AT FAMILY HALL REVISED SECTION AS SHOWN IN THE DRAWING & REVISED FINISHING SCHEDULE	B
SEPT. 2012	REVISED AS SHOWN IN THE DRAWING	A

APRIL 2012 ISSUED FOR LUMP SUM CONTRACT

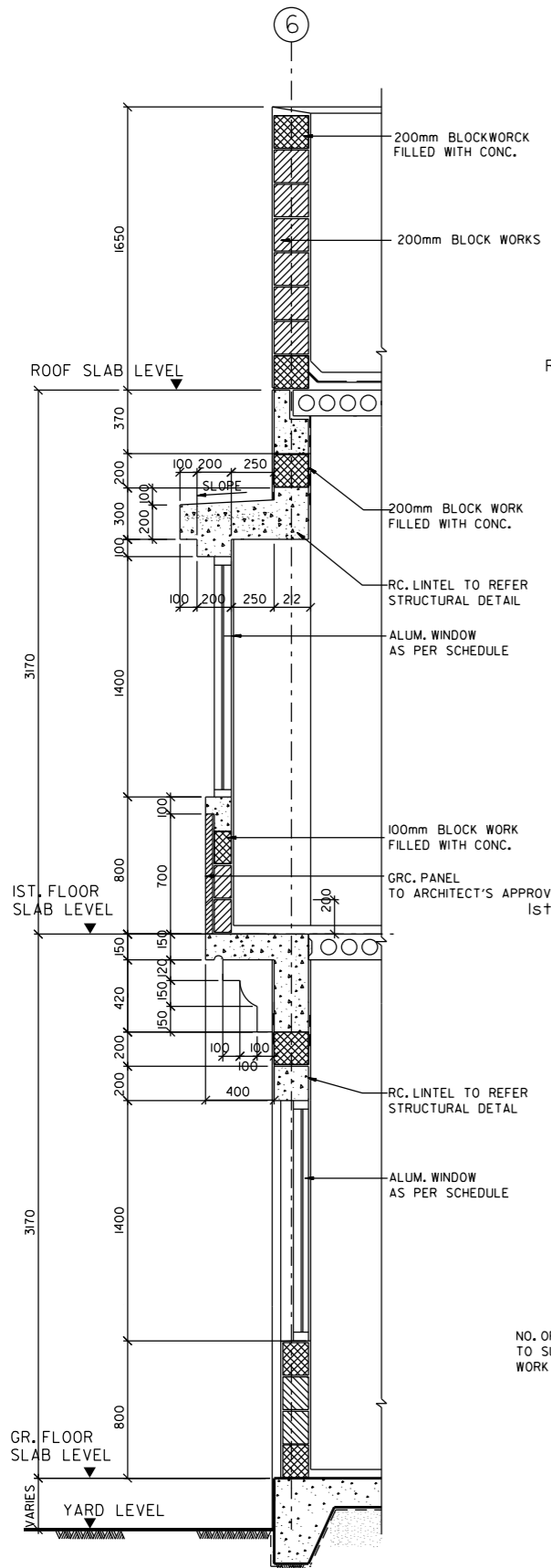
مملكة البحرين
 وزارة الإسكان
 KINGDOM OF BAHRAIN
 MINISTRY OF HOUSING

إدارة تخطيط وتصميم
 المشاريع الإسكانية
HOUSING PROJECTS PLANNING & DESIGN DIRECTORATE

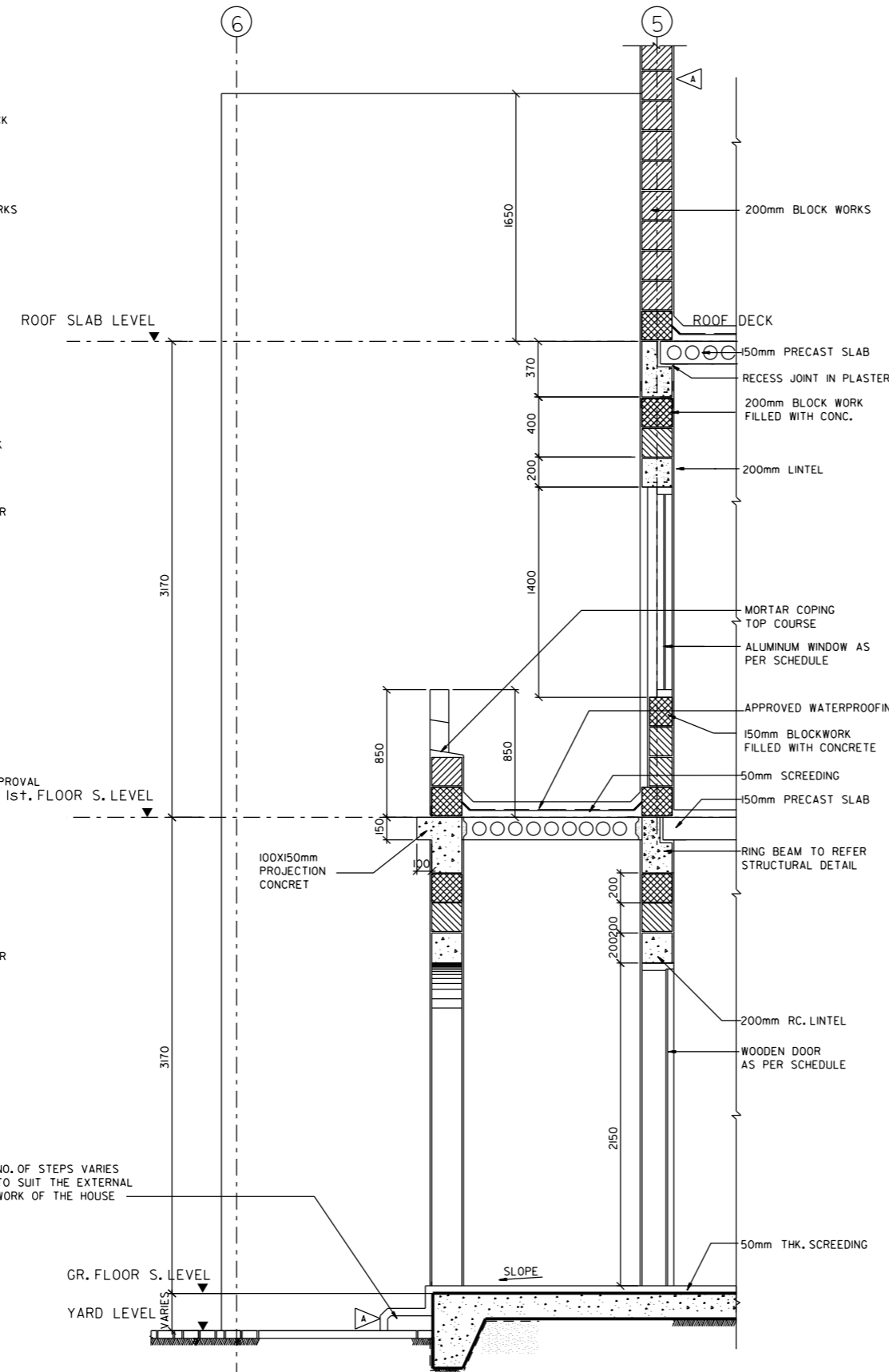
PROJECT NAME: HOUSE TYPE T8
 DRAWING TITLE: SECTIONS AND ROOM FINISHES SCHEDULE
 DESIGNED: PNV HEAD ARCHITECTURAL DESIGN
 CHECKED: NARMEEN NARMEEN KHALID AYOUB CHEF DESIGN
 DRAWN/CAD: ALI/GEORGE ADEL BIN RAJAB
 SCALE: 1:100
 DRAWING NUMBER: T8 - 70 - 04
 DATE: APR. 2012
 REVISION: C

NOTES

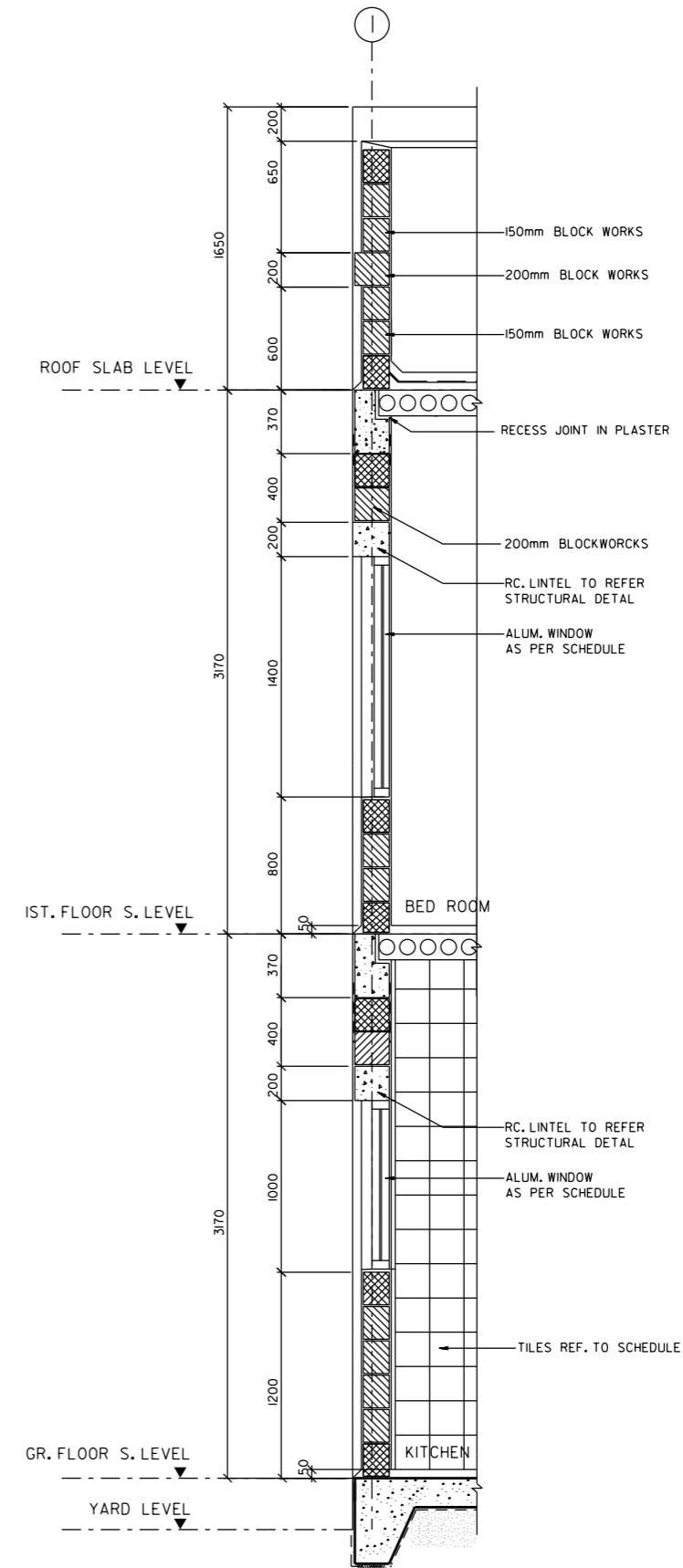
FOR TYPICAL NOTE REFER TO DRAWING No. T8-70-01



1 SECTION DETAIL "1"
70-05 SCALE 1:40



2 SECTION DETAIL "2"
70-05 SCALE 1:40



3 SECTION DETAIL "3"
70-05 SCALE 1:40

FEB. 2014	REVISED GRID NO 1:5 & TILES ADDED ON ENTRANCE STEPS
APRIL 2012	ISSUED FOR LUMP SUM CONTRACT
APP'D/DATE	REVISIONS



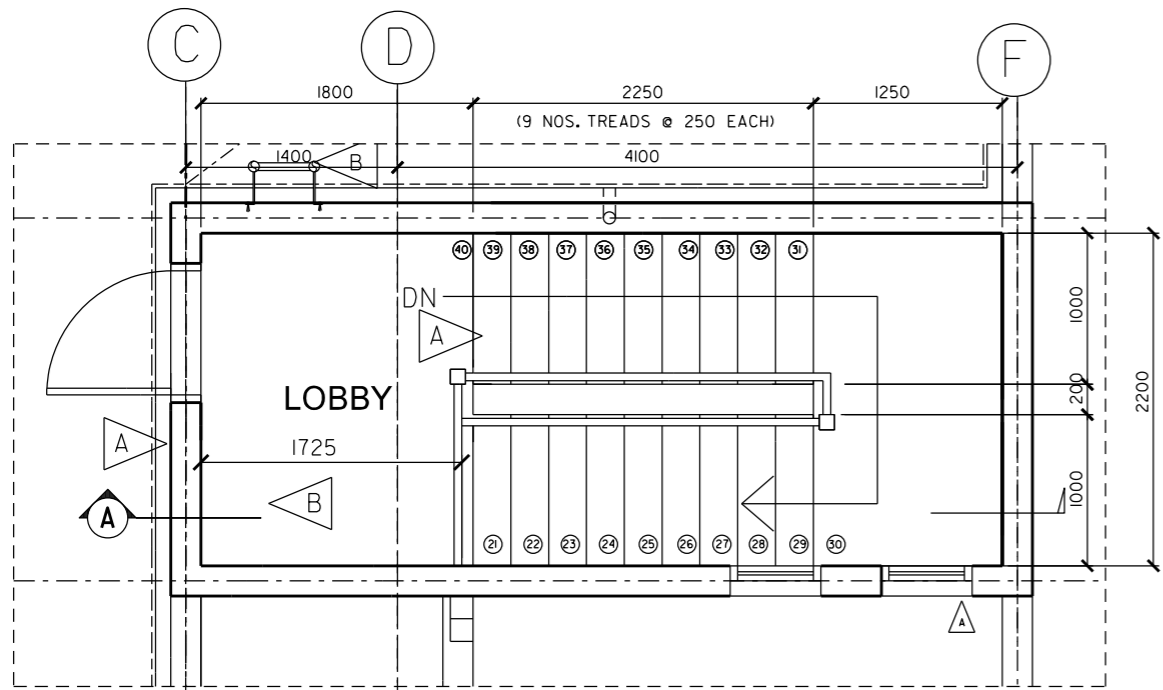
إدارة تخطيط وتصميم
المشاريع الإسكانية
HOUSING PROJECTS PLANNING & DESIGN DIRECTORATE

PROJECT NAME
HOUSE TYPE T8

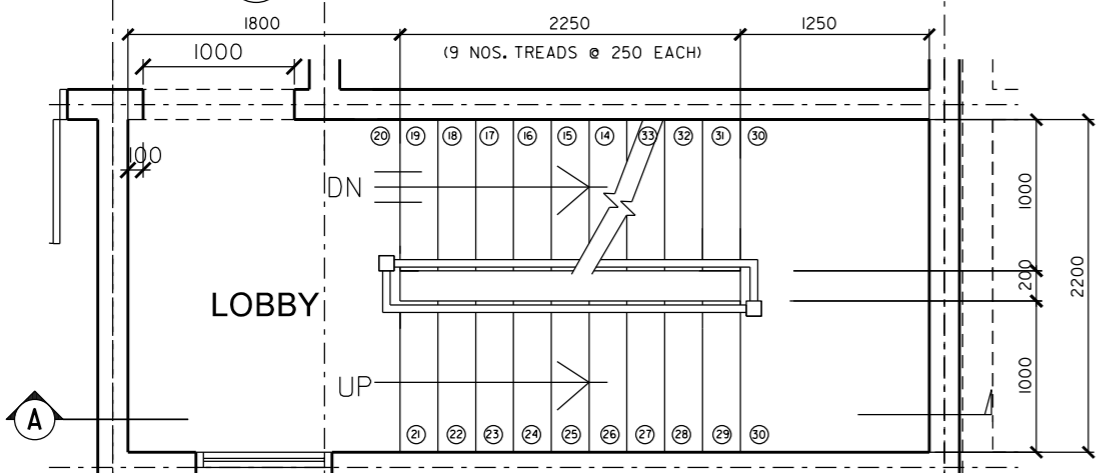
DRAWING TITLE
عنوان الرسمة

WALL DETAIL SECTIONS

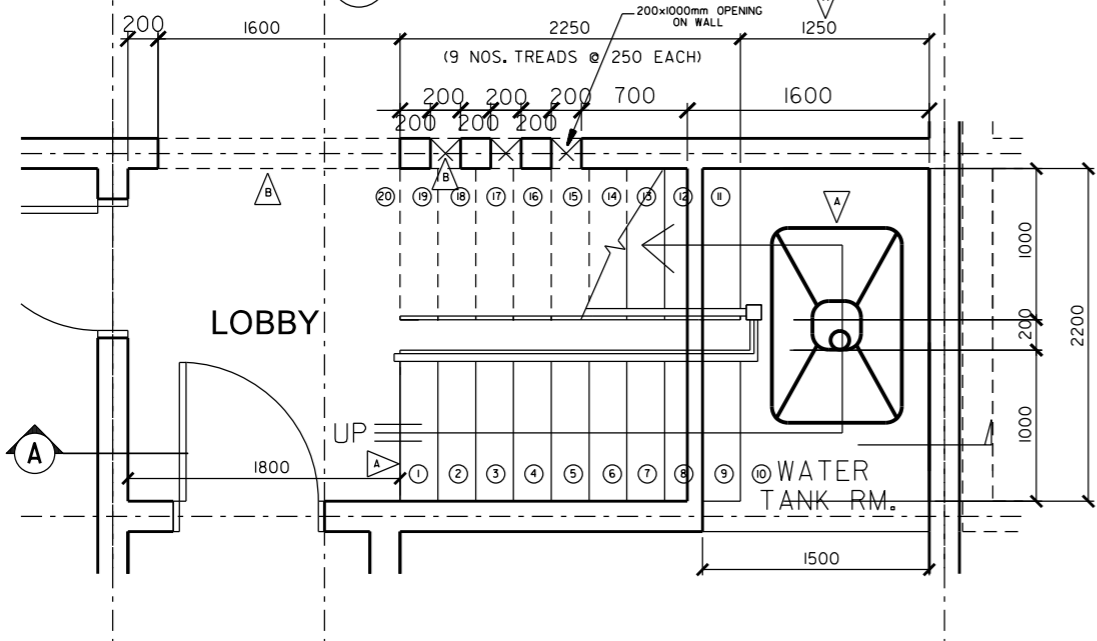
DESIGNED PNV	المصمم	HEAD, ARCHITECTURAL DESIGN
CHECKED NARMEEN	الراجع	NARMEEN KHALID AYOUB رئيس التصميم
DRAWN/CAD ALI/GEORGE	الرسم	ADEL BIN RAJAB
SCALE 1:100	مقياس الرسم	DATE APRIL, 2012
DRAWING NUMBER T8 - 70 - 05	رقم الرسم	REVISION A



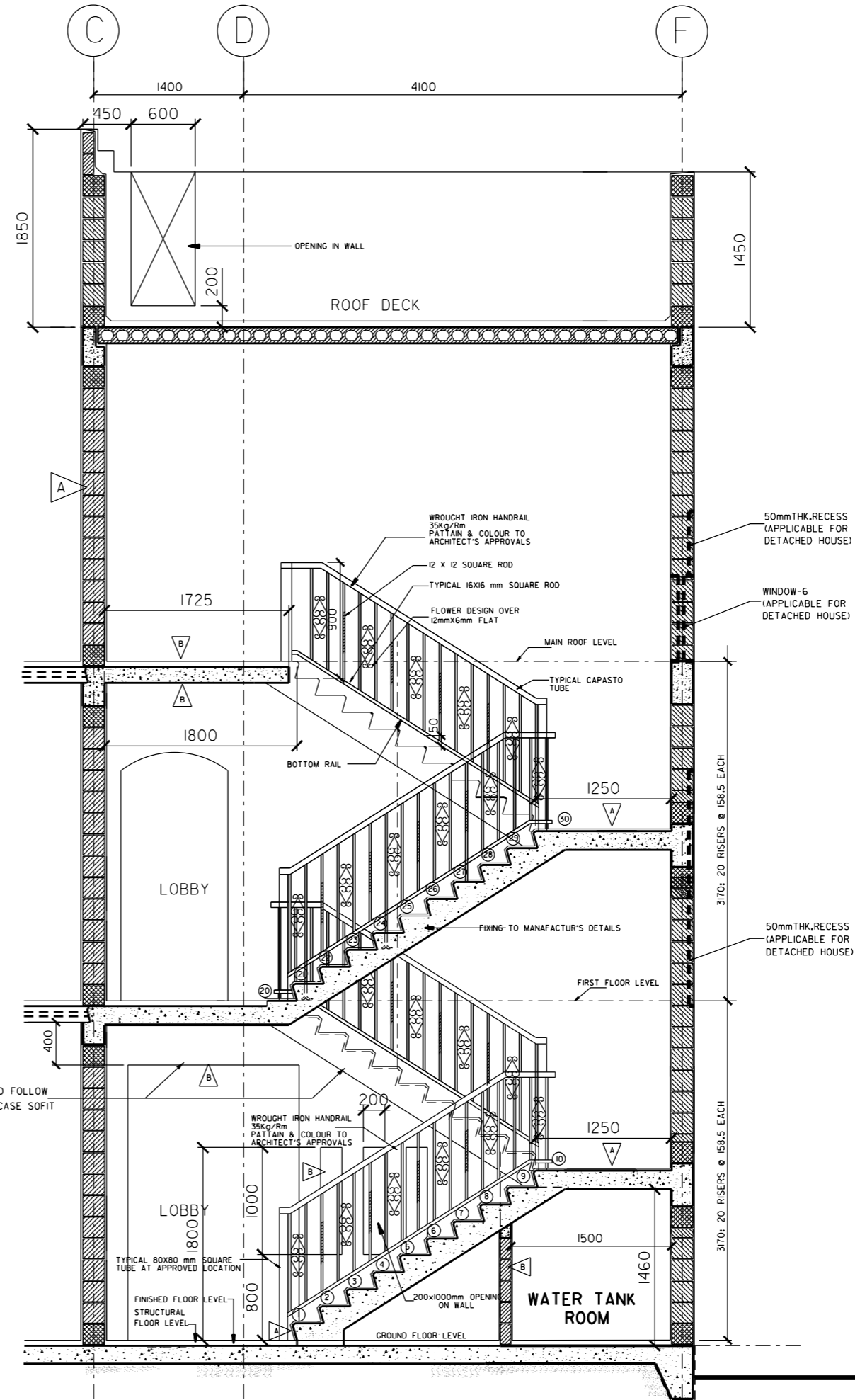
3 PLAN: ROOF LEVEL
70-06 SCALE 1:50



2 PLAN: FIRST FLOOR LEVEL
70-06 SCALE 1:50



1 PLAN: GROUND FLOOR LEVEL
70-06 SCALE 1:50



4 SECTION A-A
70-06 SCALE 1:50

NOTES

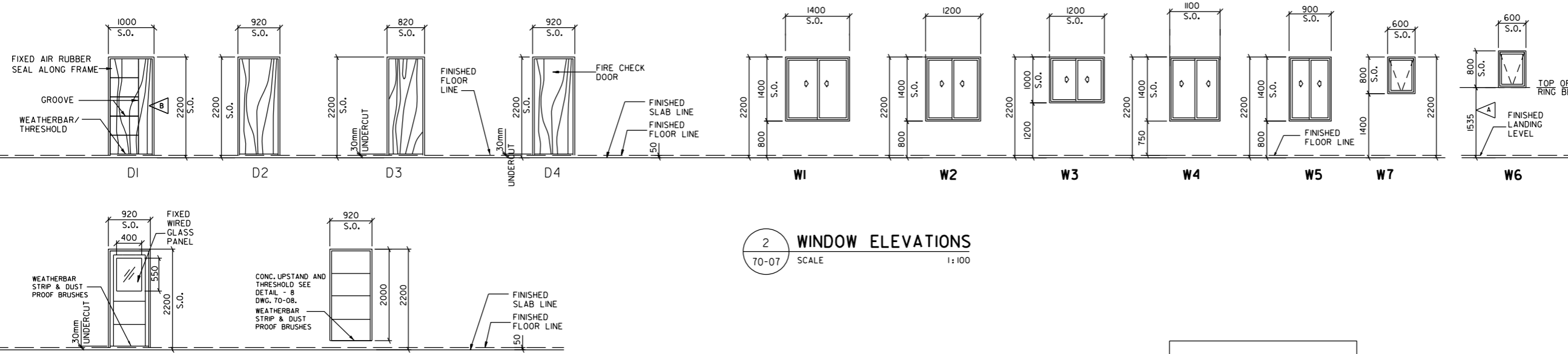
1. ALL WORKS, COMPONENTS, SETTING OUT, LEVELS, MATERIALS AND FINISHES ARE TO BE INSPECTED AND APPROVED BY ENGINEER PRIOR TO COMMENCEMENT AND INSTALLATION.
2. ANY DISCREPANCIES BETWEEN CONTRACT DRAWINGS AND/OR DOCUMENTS ARE TO BE BROUGHT UP TO THE ATTENTION OF THE ENGINEER AT ONCE.
3. DO NOT SCALE FROM DRAWINGS.
4. ALL DIMENSIONS ARE IN MILLIMETERS UNLESS STATED OTHERWISE.
5. THIS DRAWING IS TO BE READ WITH STAIRCASE DETAILS DRAWING NO. 70-07 AND ALL RELATED STRUCTURAL ENGR'S DETAILS
6. WORK SHOP DRAWING & DETAILS TO BE SUBMITTED FOR ARCHITECT'S APPROVALS
7. SHOWN RAILING PATTERN IS INDICATIVE CONTRACTOR HAS TO SUBMIT MIN.THREE DESIGN SAMPLE PATTERN AS APPROVED BY ARCHITECT USING SIMILAR SECTION WITHOUT ANY EXTRA COST IMPLICATION

FEB. 2014	800x800x50mm DROP SLAB, CANCELLED FROM THE STAIRCASE LANDING, RELOCATED WASHING MACHINE FROM STAIRCASE LANDING TO THE STORE, FALSE CEILING OMITTED, REVISED GROUND & FIRST FLOOR LEVEL PLAN & REVISED SECTION A-A	
SEPT. 2012	REVISED AS SHOWN IN THE DRAWING	
APRIL 2012	ISSUED FOR LUMP SUM CONTRACT	
APP'D/DATE	REVISIONS	

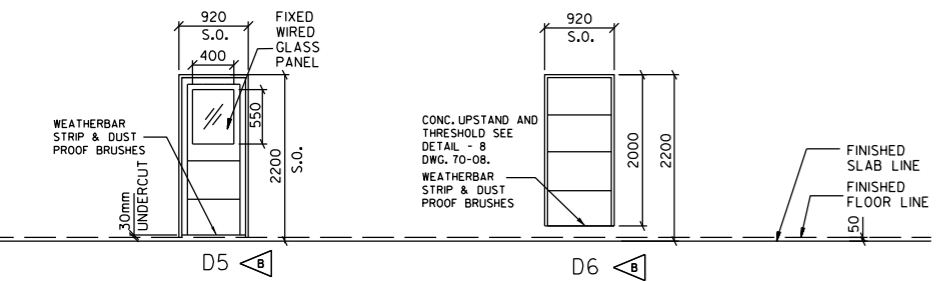


إدارة تخطيط وتصميم
المشاريع الإسكانية
HOUSING PROJECTS PLANNING & DESIGN DIRECTORATE

PROJECT NAME	HOUSE TYPE T8
DRAWING TITLE	عنوان الرسمة
	STAIRCASE DETAIL
DESIGNED	المصمم PNV
CHECKED	المراجع NARMEEN
DRAWN/CAD	الرسم ALI/GEORGE
HEAD, ARCHITECTURAL DESIGN	NARMEEN KHALID AYOUB
CHEF, DESIGN	رئيس التصميم ADEL BN RAJAB
SCALE	مقياس الرسم 1:100
DRAWING NUMBER	رقم الرسم T8 - 70 - 06
DATE	التاريخ APRIL, 2012
REVISION	B



2 WINDOW ELEVATIONS
70-07 SCALE 1:100



1 DOOR ELEVATIONS
70-07 SCALE 1:100

NOTE : ALL DOOR AND WINDOW DIMENSIONS SHOWN ARE STRUCTURAL OPENINGS

SCHEDULE OF DOORS & IRONMONGERY

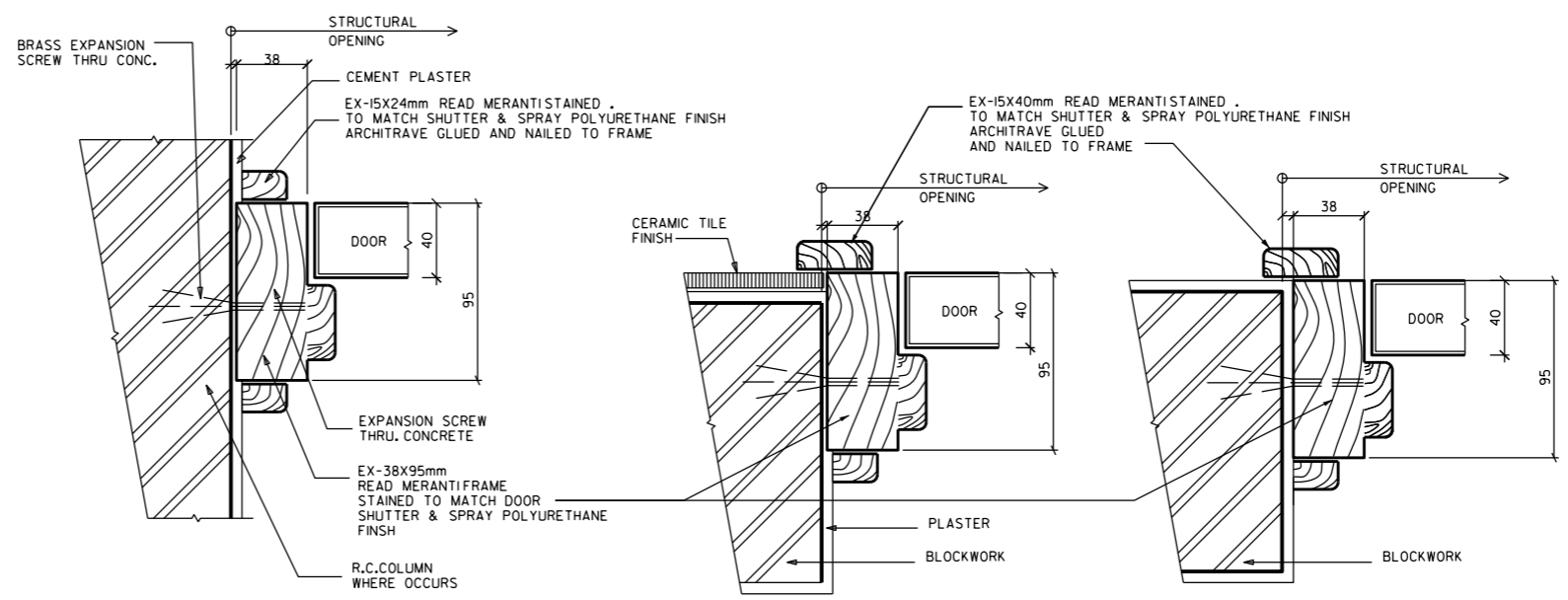
MARK	LOCATION	SETS	TYPE	DOOR SIZE (S.O.)	DESCRIPTION	LOCK/HATCH	HINGES	THRESHOLD	STOP	REMARKS
D1	ENTRANCE	1	HINGED DOUBLE	40mm THK 1000x2200	SOLID RED MARANTIDOOR WITH 4 Nos. PANEL STAINED & SPRAY CLEAR POLYURETHANE FINISH	FOR INTERNAL & EXTERNAL DOORS IRONMONGERY, REFER TO SPECIFICATIONS, SAMPLES AND SCHEDULE TO BE SUBMITTED FOR ARCHITECT'S APPROVAL.	3 Nos. EACH 100mm STAINLESS AS APPROVED	PROVIDE WEATHER BAR & THRESHOLD	FLOOR TYPE	DOOR STOP TO BE FIXED CLOSE TO WALL
D2	MAJLIS, F. HALL & BED ROOM	5	- DO -	40mm THK 920x2200	FLUSH DOOR WITH 6mm TEAK VENEER PLYWOOD WITH SPRAY POLYURETHANE FINISH		- DO -		WALL TYPE	FLOOR TYPE STOPER FOR MAJLIS
D3	BATHROOMS & STORE	4	- DO -	40mm THK 820x2200	FLUSH DOOR INTERNAL FACE WITH 6mm W.B.P. TEAK VENEER PLYWOOD & EXTERNAL FACE WITH 6mm TEAK VENEER PLYWOOD BOTH FACES SPRAYED WITH POLYURETHANE FINISH		- DO -	13MM THK. PORCELAIN TILE (FOR BATH & STORE)	-DO-	DOOR STOP TO BE FIXED CLOSE TO WALL
D4	KITCHEN INTERNAL	1	- DO -	40mm THK 920x2200	FLUSH DOOR WITH 6mm TEAK VENEER PLYWOOD WITH SPRAY POLYURETHANE FINISH (1/2 HOUR FIRE CHECK DOOR, APPROVED BY CIVIL DEFENCE)	ALL ALUMINIUM DOORS, SHALL BE BALEXCO 100/45mm NEW SERIES SECTION POWDER COATED WITH APPROVED RAL COLOUR WITH FLYSCREENS & ALL NECESSARY ACCESSORIES. SAMPLES TO BE SUBMITTED FOR ARCHITECT'S APPROVAL.	- DO -	13MM THK. PORCELAIN TILE	-DO-	TO PROVIDE DOOR CLOSER
D5	KITCHEN EXTERNAL	1	- DO -	920x2200	ALUMINUM PANEL DOOR AND FRAME WIRED GLASS PANEL INSERTS COMPLETE WITH ACCESSORIES TO BE POWDER COATED TO ARCH'S APPROVAL		3Nos.EACH ALUM. HINGES	PROVIDE WEATHER BAR & THRESHOLD	-DO-	TO PROVIDE DOOR CLOSER
D6	ROOF DOOR	2	- DO -	920x2000	ALUMINUM PANEL DOOR AND FRAME COMPLETE WITH ACCESSORIES TO BE POWDER COATED TO ARCH'S APPROVAL	ALL WOODEN DOORS HANDLE AND HINGES TO BE OF STAINLESS STEEL GRADE 316/NON CORROSIVE TYPE, AND ALL ALUMINIUM DOORS WITH APPROVED HANDLES AND LOCKS	3Nos.EACH ALUM. HINGES	PROVIDE WEATHER BAR & THRESHOLD	FLOOR TYPE	TO PROVIDE DOOR CLOSER

SCHEDULE OF WINDOWS

MARK	SETS	TYPE	FRAME	GLAZING		SIZE (W x H)	REMARKS	
				TYPE	THICKNESS			
W1	2	SLIDING	100mm WIDE ALUM.	COLOUR TINTED GLASS APPROVED BY ARCHITECT	6mm	1400 x 1400mm	BALEXCO 100.45 SERIES ALUMINIUM POWDER COATED FRAMED WINDOWS TO BE DOUBLE GLAZED, CONSISTING OF 6mm TINTED GLASS + 8mm AIR SPACER + 6mm CLEAR GLASS. SAMPLE SUBMITTED FOR ARCHITECTS APPROVAL	
W2	2	- DO -		- DO -	6mm	1200 x 1400mm		
W3	1	- DO -		- DO -	6mm	1200 x 1000mm		
W4	2	SLIDING		- DO -	6mm	1100 x 1400mm		
W5	1	- DO -		- DO -	6mm	900 x 1400mm		
W6	2	BOTTOM HUNG		- DO -	6mm	600 x 800mm		ALL WINDOWS WILL BE FIXED ON EDGE OF THE WALL FROM INSIDE. ALUMINIUM FRAME SHALL BE WITH CASING.
W7	4	BOTTOM HUNG		OBSCURED & TINTED	6mm	600 x 800mm		

APP'D/DATE	REVISIONS
AUG-2015	OMITTED DOOR CLOSER FOR BATHROOM DOOR (D3)
MAR. 2015	REVISED STAINLESS HINGES TO ALUM. HINGES FOR ALUM. DOORS AND PROVIDE DOOR CLOSER
FEB. 2014	DOOR TOP DESIGN CHANGED, DOORS (D5&D6) CHANGED TO ALUMINIUM DOOR, 2nos. DOOR CLOSER ADDED, & REVISED SCHEDULE OF DOORS
SEPT. 2012	REVISED AS SHOWN IN THE DRAWING

APRIL 2012 ISSUED FOR LUMP SUM CONTRACT



3 PLANS: TYPICAL DOOR FRAME DETAILS
70-07 SCALE 1:4

- NOTES
- ALL WORKS, COMPONENTS, SETTING OUT, LEVELS, MATERIALS AND FINISHES ARE TO BE INSPECTED AND APPROVED BY ENGINEER PRIOR TO COMMENCEMENT AND INSTALLATION.
 - ANY DISCREPANCIES BETWEEN CONTRACT DRAWINGS AND/OR DOCUMENTS ARE TO BE BROUGHT UP TO THE ATTENTION OF THE ENGINEER AT ONCE.
 - DO NOT SCALE FROM THE DRAWINGS.
 - ALL DIMENSIONS ARE IN MILLIMETERS
 - THIS DRAWING TO BE READ WITH ALL RELATED ARCHITECTS AND ENGINEERS DRAWINGS AND OTHER RELEVANT INFORMATION.

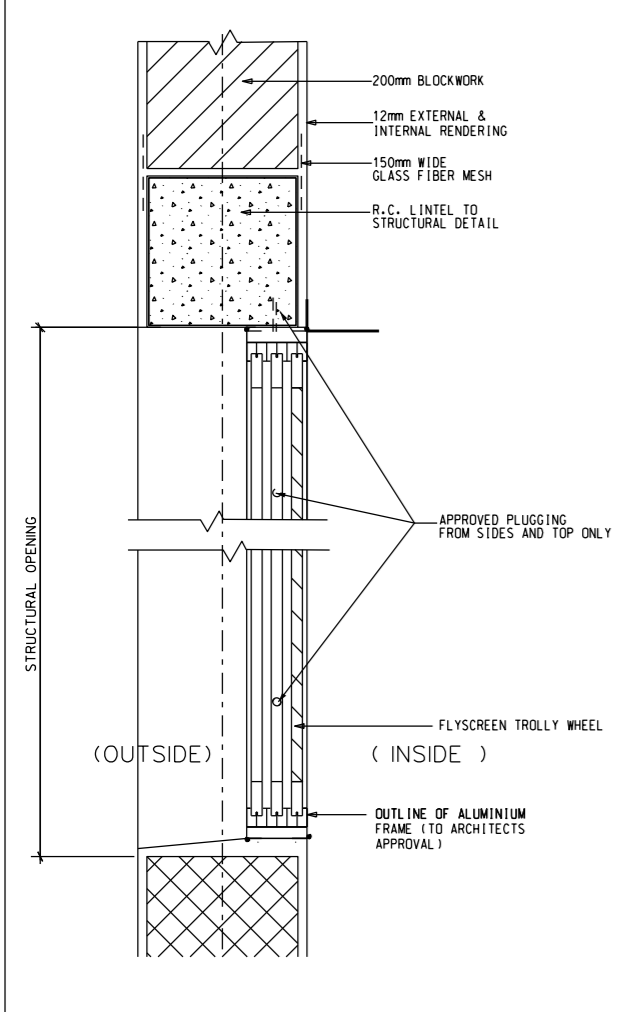


إدارة تخطيط وتصميم المشاريع الإسكانية
HOUSING PROJECTS PLANNING & DESIGN DIRECTORATE

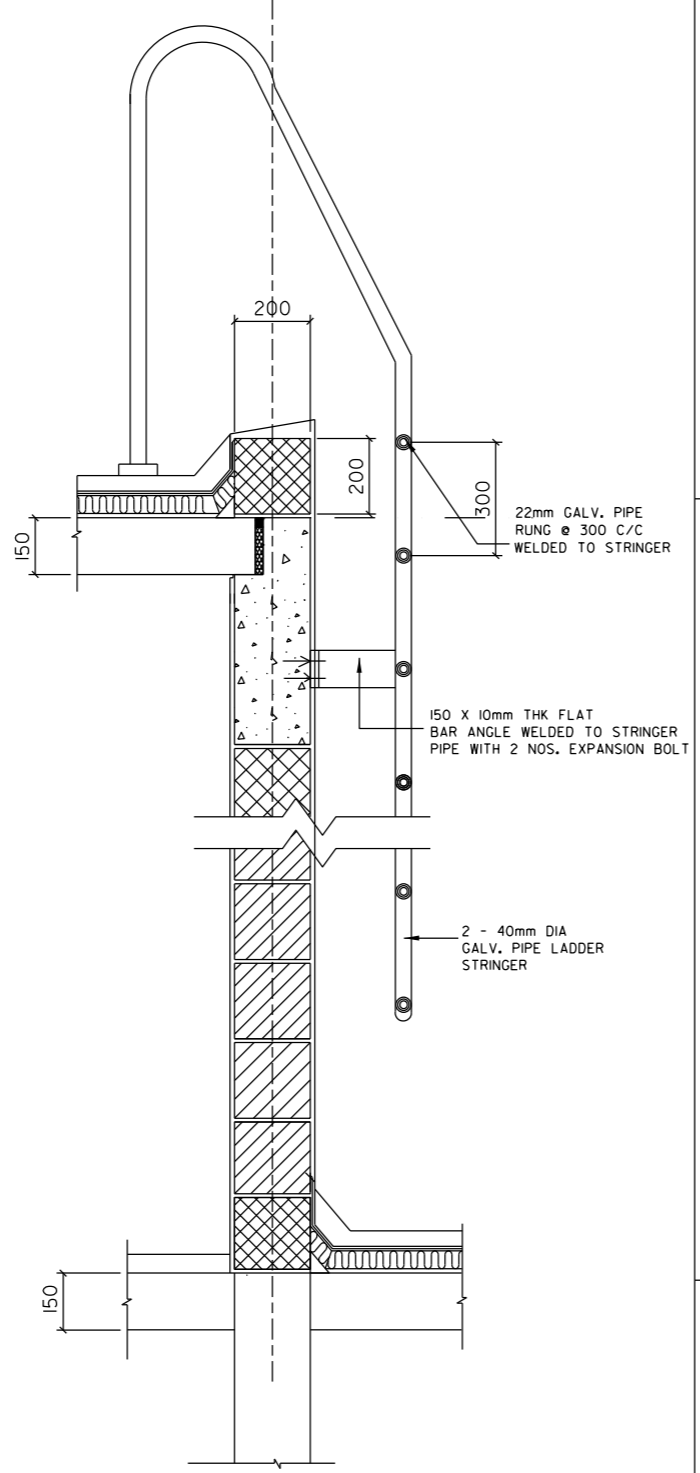
PROJECT NAME: HOUSE TYPE T8
DRAWING TITLE: عنوان الرسمة
DOOR, WINDOW & IRONMONGERY SCHEDULES . DETAILS

DESIGNED	المصمم	PNV	HEAD, ARCHITECTURAL DESIGN
CHECKED	المراجع	NARMEEN	CHEF, DESIGN
DRAWN/CAD	الرسم	AL/GEORGE	رئيس التصميم

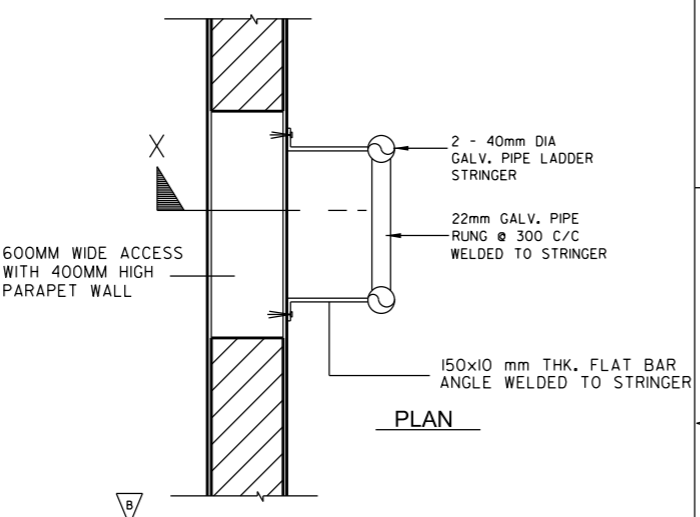
SCALE: AS SHOWN
DATE: APRIL, 2012
DRAWING NUMBER: T8 - 70 - 07
REVISION: D



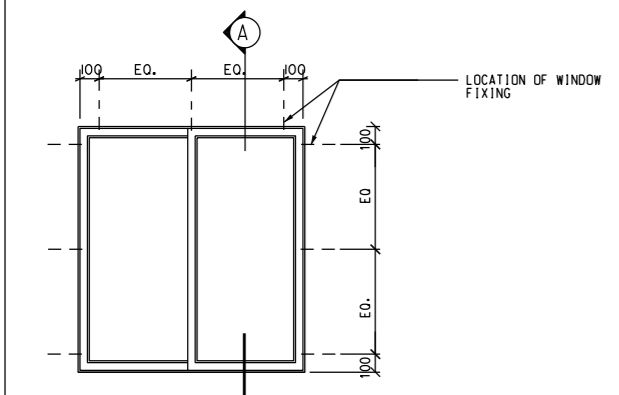
SECTION : DETAIL A
SCALE 1:10



SECTION : THRU. X



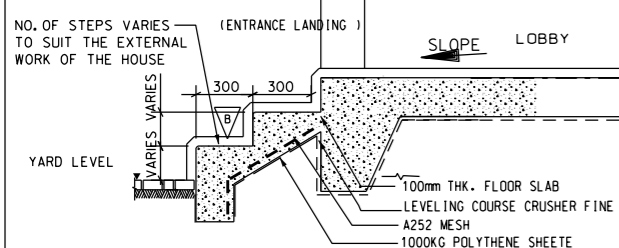
3 GALVANIZED STEEL LADDER AT ROOF LEVEL
SCALE 1:20



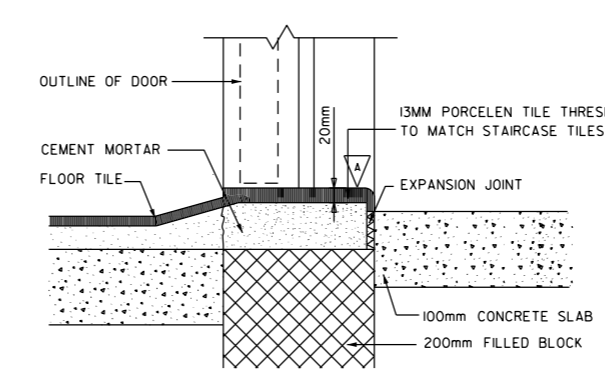
ELEVATION (A)
SCALE 1:20

1 ALUMINIUM WINDOW DETAILS
SCALE AS INDICATED

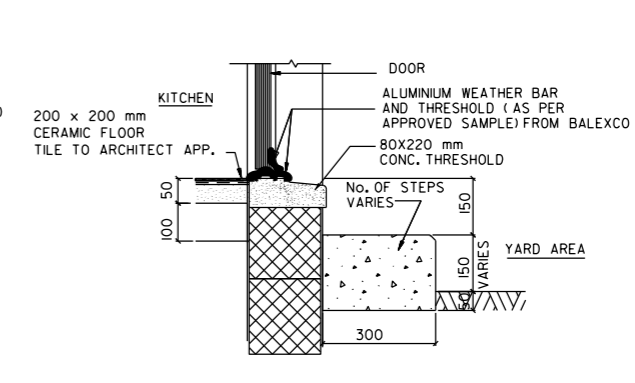
NOTE: LANDING & ENTRANCE STEPS DETAIL IS APPLICABLE IF THE DIFFERENCE IN THE LEVEL BETWEEN FINISH GROUND FLOOR & YARD IS MORE THAN ONE STEP.



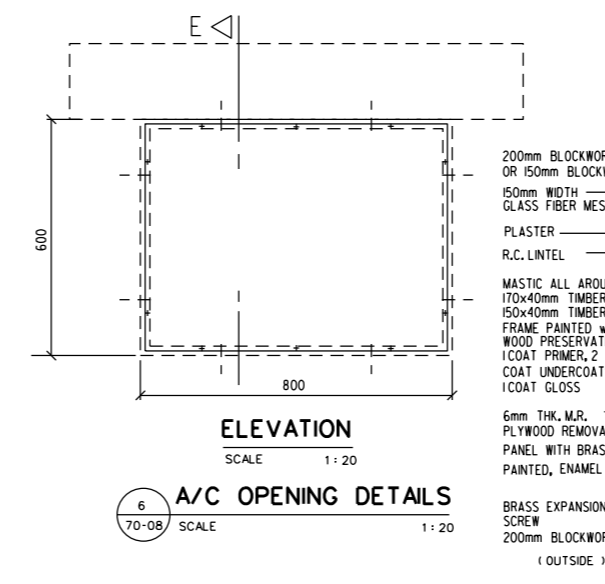
2 SECTION : ENTRANCE STEPS
SCALE NTS



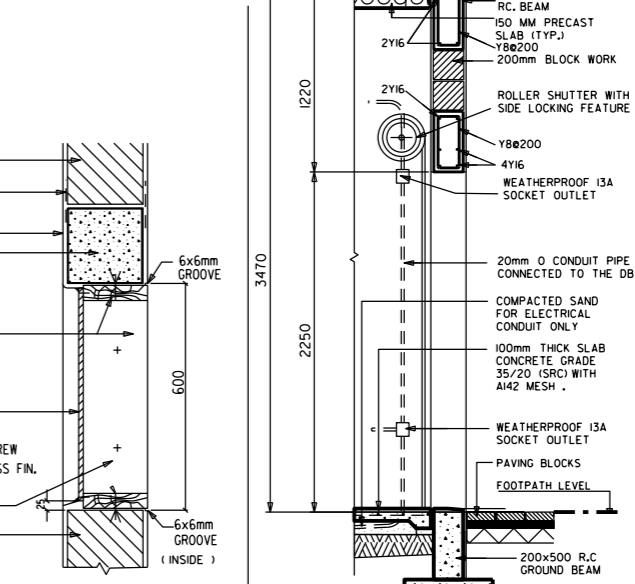
4 SECTION : DOOR SILL (FOR KITCHEN INTERNAL) GROUND FLOOR
SCALE 1:10



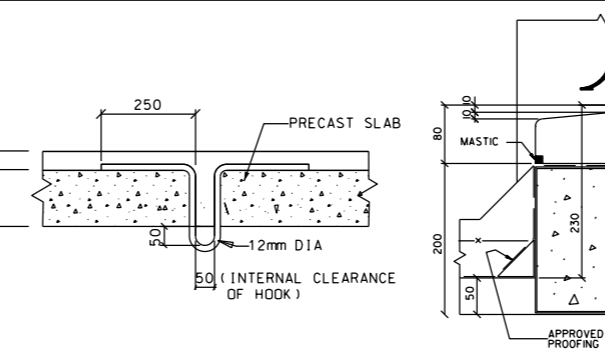
5 DOOR SILL DETAIL FOR KITCHEN (EXTERNAL)
SCALE 1:20



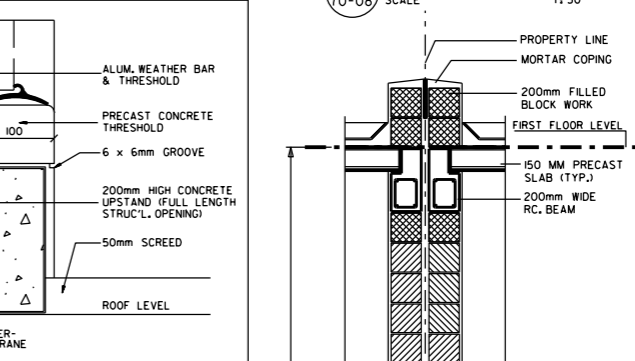
6 A/C OPENING DETAILS
SCALE 1:20



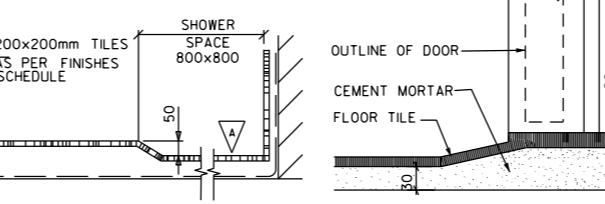
SECTION THROUGH GARAGE DOOR
SCALE 1:50



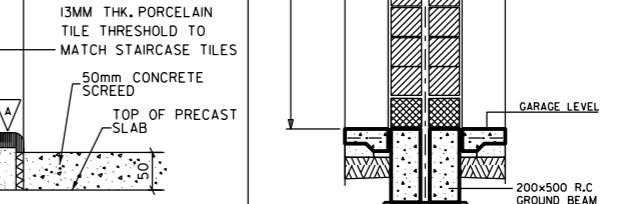
7 SECTION : CEILING FAN HOOK
SCALE 1:20



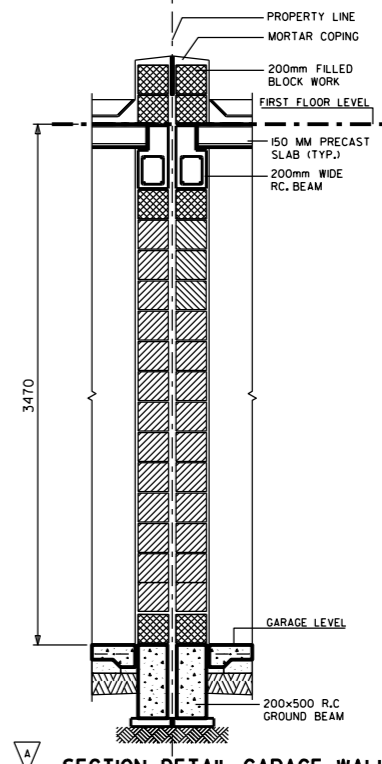
8 DOOR DETAILS ON ROOF
SCALE N.T.S.



9 SHOWER EDGING DETAIL
SCALE 1:10



10 SECTION : DOOR SILL FOR BATH & TOILET 1ST FLOOR
SCALE 1:10



12 SECTION DETAIL-GARAGE WALL BETWEEN TWO HOUSES
SCALE 1:50

NOTES

1. ALL WORKS, COMPONENTS, SETTING OUT, LEVELS, MATERIALS AND FINISHES ARE TO BE INSPECTED AND APPROVED BY THE ENGINEER PRIOR TO COMMENCEMENT AND INSTALLATION.
2. ANY DISCREPANCIES BETWEEN CONTRACT DRAWINGS AND/OR DOCUMENTS ARE TO BE BROUGHT UP TO THE ATTENTION OF THE ENGINEER AT ONCE.
3. DO NOT SCALE FROM DRAWINGS.
4. ALL DIMENSIONS ARE IN MILLIMETRES UNLESS STATED OTHERWISE.
5. THIS DRAWING IS TO BE READ WITH ALL RELATED ARCHITECTS' AND ENGINEERS' DRAWINGS AND OTHER RELEVANT INFORMATION.

FEB-2014	TILES WITH 3 NOS. GROOVE LINES ADDED ON ENTRANCE STEPS & GALVANIZED STEEL LADDER AT ROOF LEVEL ADDED	B
SEPT. 2012	REVISED AS SHOWN IN THE DRAWING	A

APRIL 2012 ISSUED FOR LUMP SUM CONTRACT

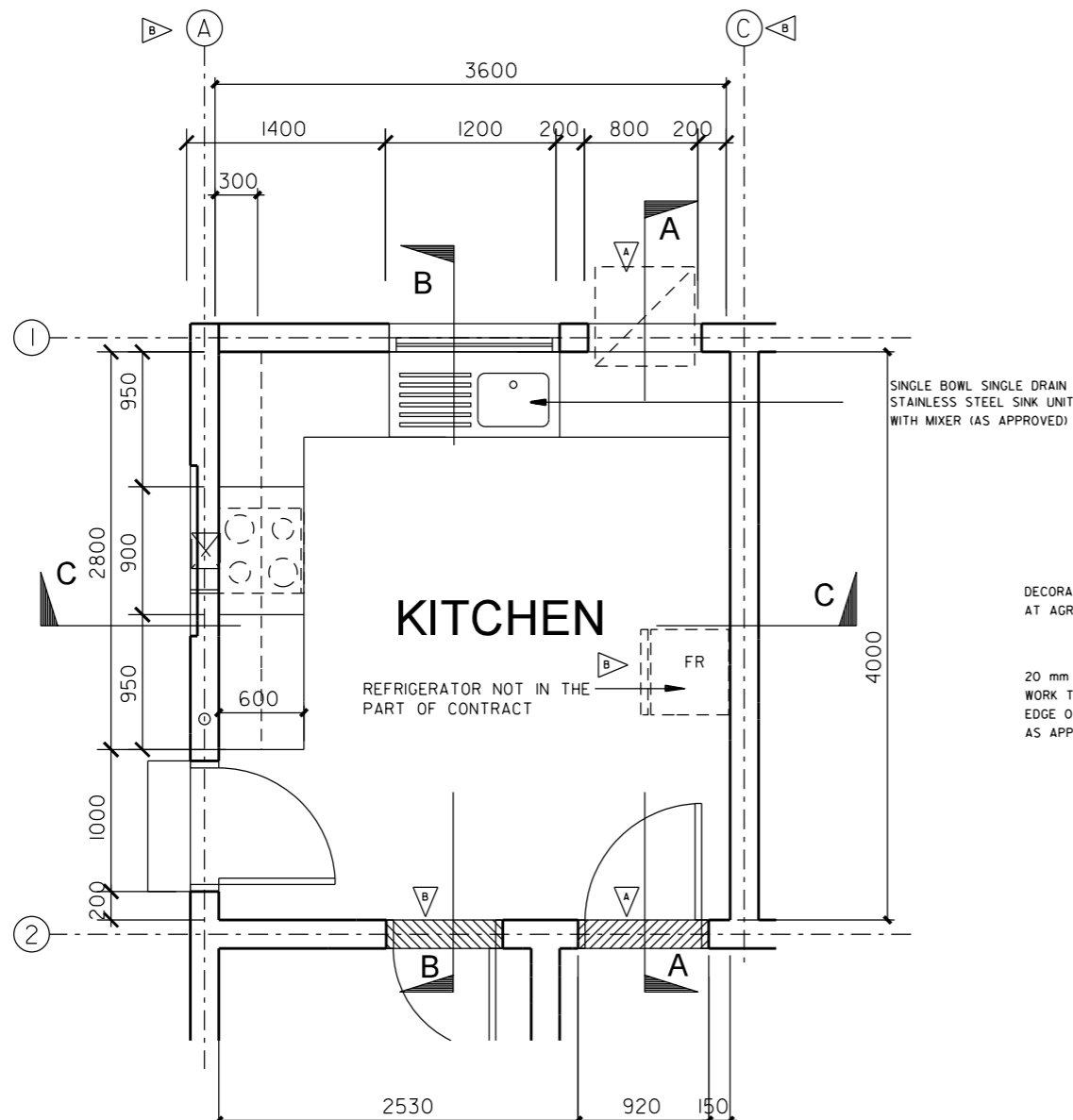
مملكة البحرين
 وزارة الإسكان
 KINGDOM OF BAHRAIN
 MINISTRY OF HOUSING

إدارة تخطيط وتصميم المشاريع الإسكانية
 HOUSING PROJECTS PLANNING & DESIGN DIRECTORATE

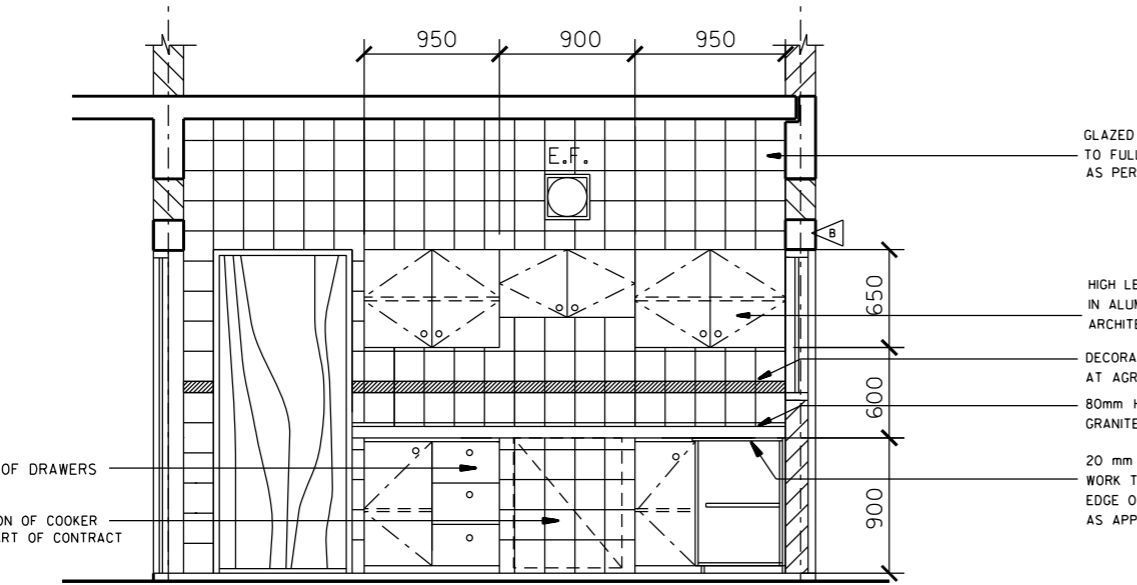
PROJECT NAME: **HOUSE TYPE T8**
 DRAWING TITLE: عنوان الرسمة

MISCELLANEOUS DETAILS

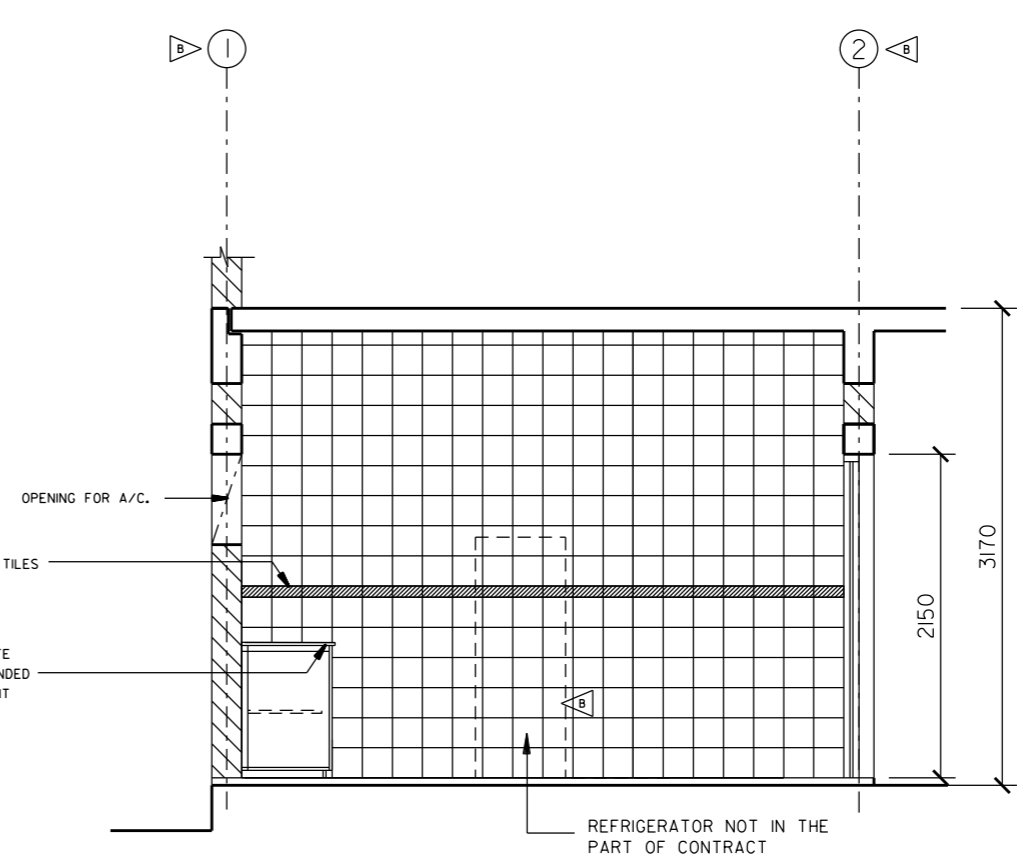
DESIGNED: PNV	المصمم	رئيس التصميم المعماري	HEAD ARCHITECTURAL DESIGN
CHECKED: NARMEEN	المراجع	NARMEEN KHALID ATOUB	رئيس التصميم
DRAWN/CAD: ALI/MOH/SIN/BG	الرسم	ADEL BIN RAJAB	رئيس التصميم
SCALE: AS SHOWN	مقياس الرسم	DATE: APRIL, 2012	التاريخ
DRAWING NUMBER: T8 - 70 - 08	رقم الرسم	REVISION: B	التاريخ



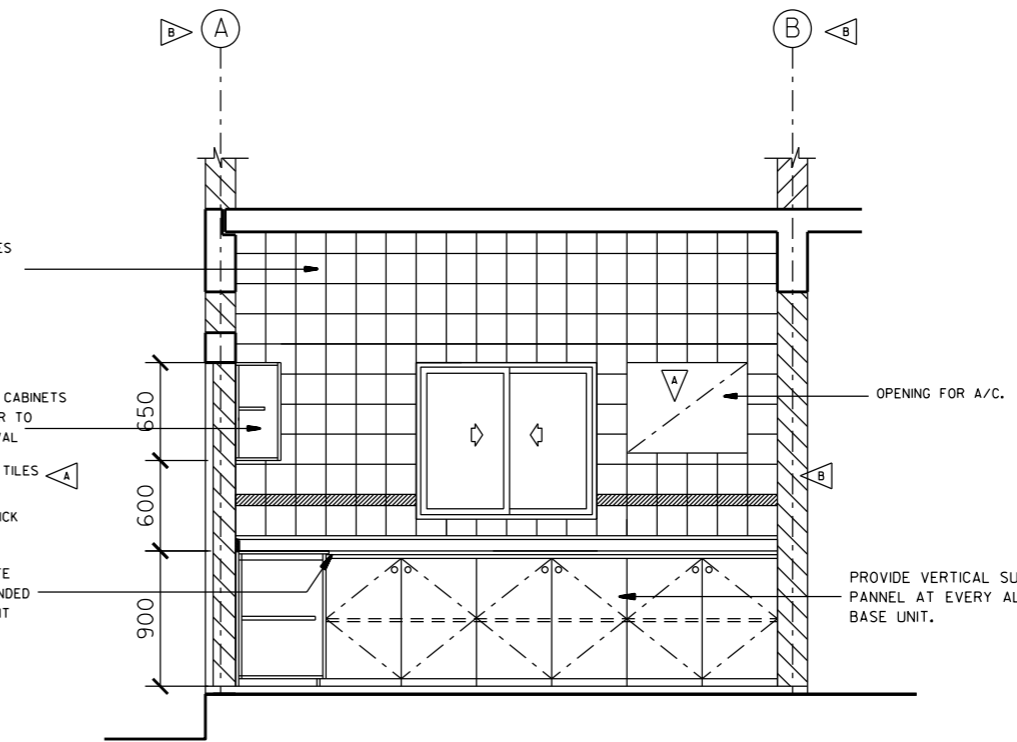
1 PLAN OF KITCHEN
70-09 SCALE 1:50



3 SECTION B - B.
70-09 SCALE 1:50



2 SECTION A - A.
70-09 SCALE 1:50



4 SECTION C - C.
70-09 SCALE 1:50

NOTES

1. ALL WORKS, COMPONENTS, SETTING OUT, LEVELS, MATERIALS AND FINISHES ARE TO BE INSPECTED AND APPROVED BY THE ENGINEER PRIOR TO COMMENCEMENT AND INSTALLATION.
2. ANY DISCREPANCIES BETWEEN CONTRACT DRAWINGS AND/OR DOCUMENTS ARE TO BE BROUGHT UP TO THE ATTENTION OF THE ENGINEER AT ONCE.
3. DO NOT SCALE FROM THE DRAWINGS.
4. ALL DIMENSIONS ARE IN MILLIMETERS UNLESS STATED OTHERWISE.
5. THIS DRAWING TO BE READ WITH ALL RELATED ARCHITECTS AND ENGINEERS DRAWINGS AND OTHER RELEVANT INFORMATION.
6. CONTRACTOR SHALL SUBMIT WORKSHOP DRAWINGS ALONG WITH ALL SAMPLES, FITTINGS, FINISHES AND COLOR OPTIONS FOR ARCHITECTS APPROVAL .
7. KITCHEN WALLS TO BE FULLY TILED I.E. CABINETS TO BE FIXED OVER TILED SURFACE

FEB-2014	THRESHOLD ADDED IN STORE, STORE DOOR POSITION CHANGE, RELOCATED REFRIGERATOR & GRID LINE ADDED	B
SEP-2012	REVISED AS SHOWN IN THE DRAWING	A
APRIL 2012	ISSUED FOR LUMP SUM CONTRACT	
APP'D/DATE	REVISIONS	



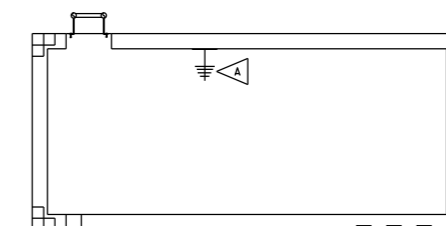
إدارة تخطيط و تصميم
المشاريع الإسكانية
HOUSING PROJECTS PLANNING &
DESIGN DIRECTORATE

PROJECT NAME
HOUSE TYPE T8
DRAWING TITLE
عنوان الرسمة
KITCHEN DETAILS

DESIGNED PNV	المصمم	HEAD, ARCHITECTURAL DESIGN
CHECKED NARMEEN	الراجع	NARMEEN KHALID AYOUB
DRAWN/CAD SIMON/GEORGE	الرسم	رئيس التصميم ADEL BIN RAJAB
SCALE 1:50	مقياس الرسم	DATE APRIL, 2011
DRAWING NUMBER T8 - 70 - 09	رقم الرسم	REVISION B

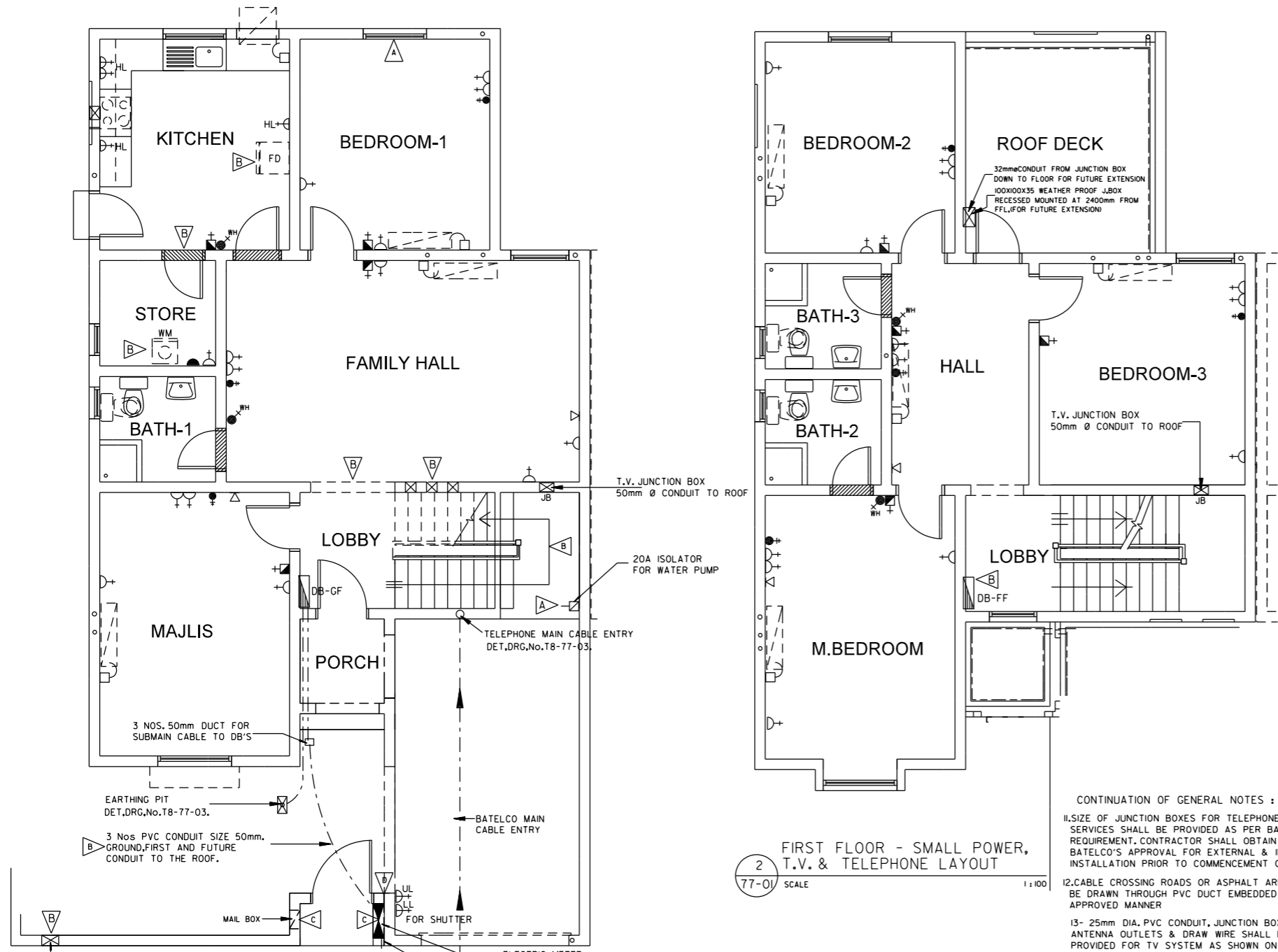
NOTES

- GENERAL NOTES :
- THE ELECTRICAL INSTALLATION SHALL BE CARRIED OUT IN ACCORDANCE TO MINISTRY OF HOUSING ELECTRICAL DRAWINGS, EDD LATEST RULES AND REGULATIONS BY USING PVC SINGLE CORE CABLES DRAWN THROUGH PVC CONDUIT RISE UP AND DROP DOWN THROUGH CONCEALED PVC CONDUIT IN WALLS, FLOOR SLABS, ETC.
 - THE FLOURESCENT LIGHT FITTINGS SHALL BE HPF TYPE OF 0.9 P.F. MINIMUM & SWITCH START TYPE WITH CAPACITOR TO AVOID SUPPRESS INTERFERENCE UNLESS OTHERWISE MENTIONED
 - ALL LIGHT SWITCHES SHALL BE IOA GRID MOUNTED TYPE AND SHALL BE SUITABLE FOR FLUSH INSTALLATION IN CONCEALED SYSTEM. SWITCHES SHALL BE GANGED AS PER ENGINEER'S APPROVAL AS SHOWN ON DRAWING AND TO BE MOUNTED AT 1400mm. ABOVE FINISH FLOOR LEVEL
 - ALL NECESSARY SUPPORT SHALL BE PROVIDED TO INSTALL ALL ELECTRICAL ITEMS IN AN APPROVED MANNER.
 - PVC ROUND BOX TO BE PROVIDED ON WALL OR CEILING AS APPROPRIATE FOR LIGHT FITTINGS
 - SPARE M.C.B. (30%) IN EACH DISTRIBUTION BOARD, SHALL BE PROVIDED.
 - TYPE AND NUMBER OF WAYS OF DISTRIBUTION BOARD TO BE PROVIDED AS PER EDD REQUIREMENT AND AS SHOWN ON THE DRAWING.
 - ALL EXTERNAL ELECTRICAL ITEM SHALL BE WEATHERPROOF AND WATERTIGHT (MIN. IP65)
 - CONTRACTOR SHALL BE PROVIDED CONNECTION UNIT NEAR EACH EQUIPMENT AND AS INDICATED ON DRAWING
 - BONDING SHALL BE PROVIDED FOR ALL COLD AND HOT WATER PIPES.
 - 2 No. CONCRETE PLINTH (400X400X100mm) SIZE FOR EACH A/C UNIT PROVIDE BY CONTRACTOR

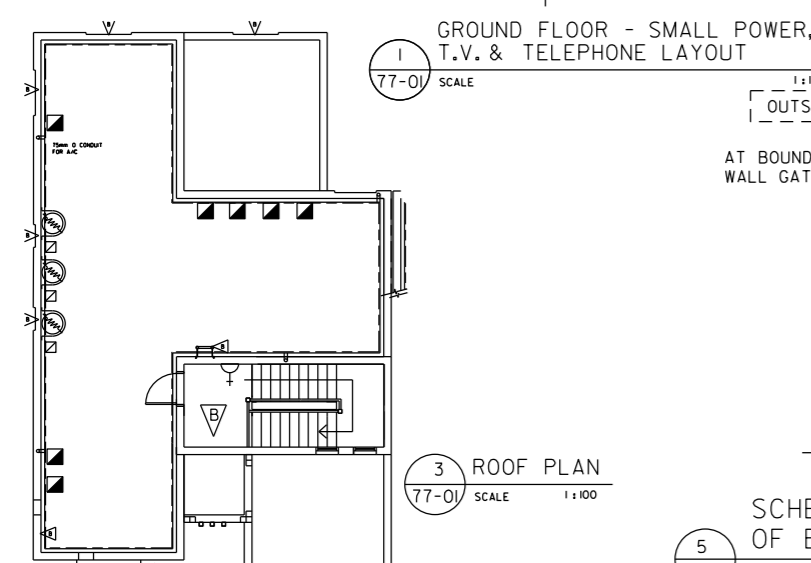


4 STAIRCASE'S ROOF POWER LAYOUT
77-01 SCALE 1:100

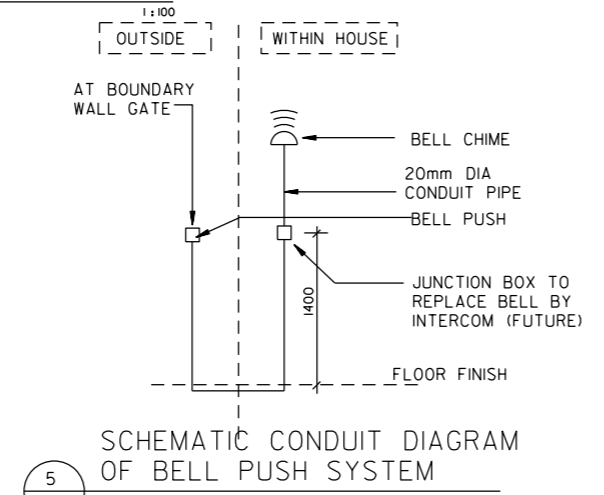
- LEGEND :
- DECORATIVE LIGHT FITTING WITH ENERGY SAVER LAMP
 - 2 X 18W COMPACT ENERGY SAVER LAMP FITTING AND CONNECTION TO MIN IP44 (DOWN LIGHTER)
 - 1X 18W COMPACT FLOURESCENT LIGHT FITTING SURFACE-MOUNTED (BULKHEAD) TO MIN IP65
 - 1X 18W COMPACT FLOURESCENT SURFACE-MOUNTED LIGHT FITTING WEATHERPROOF TO MIN IP44
 - 1X 18W COMPACT FLOURESCENT SURFACE-MOUNTED LIGHT FITTING WEATHERPROOF TO MIN IP44 MIRROR LIGHT
 - 1X 18W COMPACT FLOURESCENT SURFACE-MOUNTED LIGHT FITTING TO MIN IP21
 - LED SPOT LIGHT
 - 20A ISOLATOR FOR WATER PUMP
 - 13A SWITCH SOCKET DOUBLE
 - 13A SWITCH SOCKET OUTLET
 - WEATHERPROOF 13A SOCKET OUTLET
 - HIGH LEVEL 13A SOCKET OUTLET
 - 45A COOKER SWITCH WITH NEON INDICATOR WITH LENGTH OF 25mm CONDUIT TERMINATING AT 300mm AFFL WITH 45A COOKER OUTLET.
 - 2X36 W FLOURECENT TYPE, PRISMATIC DIFFUSER, WITH DECENT DECORATIVE DUST PROOF FITTING ONE-GANG / ONE WAY SP 5A SWITCH
 - 2G1W TWO-GANG / ONE WAY SP 5A SWITCH
 - 3G1W THREE-GANG / ONE WAY SP 5A SWITCH
 - 1G2W ONE-GANG / TWO WAY SP 5A SWITCH
 - 20A WATER HEATER SWITCH WITH NEON LIGHT INDICATOR
 - 20A WASHING MACHINE SWITCH WITH NEON LIGHT INDICATOR
 - TV AERIAL OUTLET PLATE, FLUSH MOUNTED BOX CONNECT TO 25 CONDUIT TO ROOF WITH PROVIDING INDIVIDUAL TO JUNCTION BOX & CONDUIT TO ROOF WITH WIRING & SOCKET (TYPE OF WIRING RG 6)
 - 20A FLEX OUTLET PLATE FOR WATER HEATER, INSTALLED 1800 AFFL AND AS PER SITE CONDITION
 - WATER HEATER WITH PROTECTIVE FIBRE CASEMENT COVER, COLOR TO MATCH ADJOINING WALL
 - EXHAUST FAN WITH FLEX OUTLET SWITCH W/ 3A FUSE
 - CEILING MOUNTED EXTRACT FAN
 - METER CABINET (TO BE INCLUDED IN LUMP SUM)
 - CONSUMER UNIT AND E.L.C.B. FLUSH MOUNTED 1775 AFFL TO CENTER OF DB (TO BE INCLUDED IN LUMP SUM)
 - TELEPHONE OUTLET-COMPLET CONDUIT, WIRE & TELEPHONE SOCKET FOR SHOWN POINT AND FOR REMAINING, WITH DRAWN WIRE AND OUTLET PLATE (TYPE OF WIRING CAT 5)
 - CEILING FAN
 - FLUSH-MOUNTED FAN CONTROLLER
 - BELL CHIME CONNECTED TO LIGHT CIRCUIT AND TO BELL PUSH
 - WATER HEATER ISOLATOR
 - BELL WIRING , BELL PUSH & BELL
 - 45A D.P. SWITCH WITH NEON INDICATOR WITH FLEX OUTLET FOR A/C
 - 20A FLEX OUTLET PLATE FOR WASHING MACHINE, INSTALLED 1200 mm AFFL.
 - 45A FLEX OUTLET PLATE FOR A/C KITCHEN INSTALLED NEAR A/C OPENING
 - KITCHEN AREA SWITCHES SHALL BE MOUNTED IN DOLIES BETWEEN 1400 AND 1600mm AFFL, IN TWO HORIZONTAL ROW.
 - Y6 CIRCUIT NUMBER
 - WP WATERPROOF FITTING
 - EARTH PIT
 - BAHRAIN TELEPHONE ENTRY BOX
 - 32A SPN W/P ISOLATOR FOR CONDENSING UNIT (TYPICAL)
 - 2Kg CO2 FIRE EXTINGUISHER (WITH MOUNTING BRACKET & GANGE, STAINLESS STEEL BODY)



2 FIRST FLOOR - SMALL POWER, T.V. & TELEPHONE LAYOUT
77-01 SCALE 1:100



1 GROUND FLOOR - SMALL POWER, T.V. & TELEPHONE LAYOUT
77-01 SCALE 1:100



5 SCHEMATIC CONDUIT DIAGRAM OF BELL PUSH SYSTEM
77-01 SCALE NTS.

- CONTINUATION OF GENERAL NOTES :
- SIZE OF JUNCTION BOXES FOR TELEPHONE SERVICES SHALL BE PROVIDED AS PER BATELCO REQUIREMENT. CONTRACTOR SHALL OBTAIN BATELCO'S APPROVAL FOR EXTERNAL & INTERNAL INSTALLATION PRIOR TO COMMENCEMENT OF WORK
 - CABLE CROSSING ROADS OR ASPHALT AREA TO BE DRAWN THROUGH PVC DUCT EMBEDDED IN AN APPROVED MANNER
 - 25mm DIA. PVC CONDUIT, JUNCTION BOXES, TV ANTENNA OUTLETS & DRAW WIRE SHALL BE PROVIDED FOR TV SYSTEM AS SHOWN ON DRAWING
 - DRAWINGS ARE TO BE COORDINATED BY THE CONTRACTOR WITH OTHER SERVICES & PROPERLY DIMENSIONED. WORKING DRAWING TO BE SUBMITTED FOR THE APPROVAL OF SENIOR SITE ENGINEER PRIOR TO START OF WORK ON ANY SECTION
 - CONTRACTOR SHALL INCLUDE ALL NECESSARY COST & TO SUBMIT A SAMPLE OF ALL LIGHT FITTINGS FOR FINAL APPROVAL. ENGINEER RESERVE THE RIGHT TO ASK FOR ALTERNATIVE TYPE OF LIGHT FITTINGS WITHOUT ANY EXTRA COST IF SAMPLE IS DISAPPROVED
 - ALL ELECTRICAL MATERIALS MUST BE APPROVED BY ED, THE ED APPROVAL LETTER SHALL BE VALID BY MINIMUM 3 YEARS FROM THE DATE OF SUBMISSION
 - THE MANUFACTURERS OF ELECTRICAL MATERIALS SHALL BE ISO 9000 CERTIFIED
 - ALL ELECTRICAL MATERIALS, ESPECIALLY THE DISTRIBUTION BOARD (DB) COMPONENTS MUST HOLD MARKS OF CONFORMITY FROM INTERNATIONALLY RECOGNISED CERTIFICATED ACCREDITATION BODY
 - DISTRIBUTION BOARDS (DB) SUPPLIERS MUST SUBMIT A GURANTEEE LETTER OF MINIMUM 5 YEARS AGAINST MANUFACTURING OF THE (DB) AND ITS COMPONENTS
 - THIS DRAWING IS ISSUED AS GUIDE LINE TO INDICATE THE STANDARD REQUIREMENTS OF MINISTRY. CONTRACTOR SHALL SUBMIT SHOP DRAWING, CIRCUIT DIAGRAM, LOAD DISTRIBUTION CALCULATION AND RELATED INFORMATION FOR *TECHNICAL APPROVALS* FROM ELECTRICAL ENGINEER PRIOR TO WORK.

APP'D/DATE	REVISIONS
MAR. 2015	EXPANSION JOINT ADDED
JUN. 2014	RELOCATED ELECTRIC METER AND ADDED MAIL BOX
FEB. 2014	INCREASED OPENING AT FAMILY HALL AND ADDED 200x1000mm OPENING ON WALL RELOCATED ELECTRIC METER & WATER METER RELOCATED TELEPHONE POINT. PROVISION FOR WASHING MACHINE & ELECTRICAL POINT ADDED AT STORE & GARAGE AREA ADDED
SEP. 2012	REVISED AS SHOWN IN THE DRAWING
APRIL 2012	ISSUED FOR LUMP SUM CONTRACT

مملكة البحرين
 وزارة الإسكان
 KINGDOM OF BAHRAIN
 MINISTRY OF HOUSING

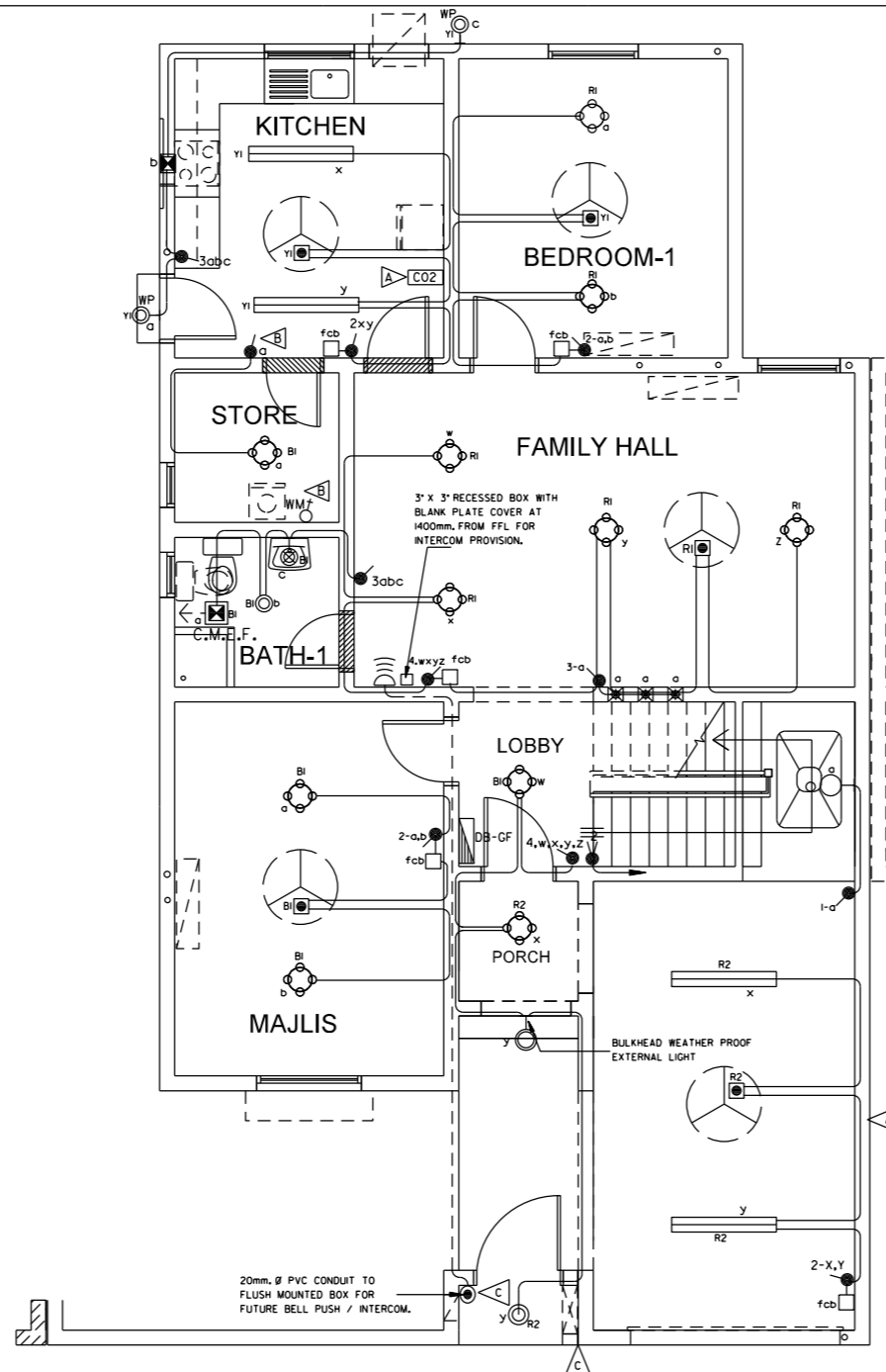
إدارة تخطيط و تصميم المشاريع الإسكانية
HOUSING PROJECTS PLANNING & DESIGN DIRECTORATE

PROJECT NAME	HOUSE TYPE T8
DRAWING TITLE	عنوان الرسم
POWER-ELECTRICAL LAYOUT PLAN	
DESIGNED	المصمم
HASAN YASEEN	HEAD, ARCHITECTURAL DESIGN
CHECKED	التصميم
HASAN YASEEN	NARMEEN KHALID AYOUB
DRAWN/CAD	الرسم
ALI/AHMAD/GEORGE	ADEL BIN RAJAB
SCALE	مقياس الرسم
1:100	DATE
	التاريخ
DRAWING NUMBER	رقم الرسم
T8 - 77 - 01	REVISION
	D

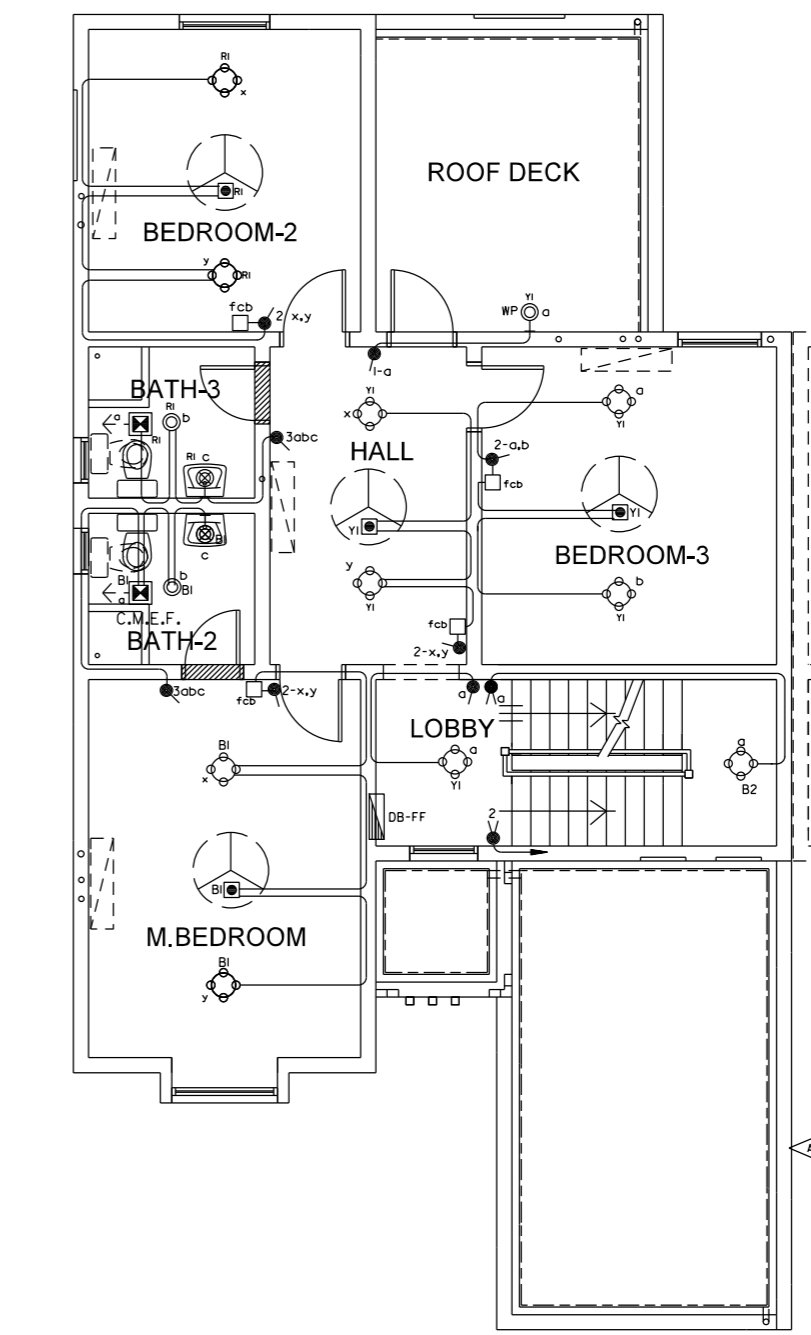
DB-GROUND FLOOR.		CABLE SIZE: 4C 16mm ² XLPE/SWA/PVC				
BREAKING CAPACITY : 6 KA 230/400V 50HZ		TYPE : 4+4 WAY 100A TPN+E BUSBARS(FLUSH MOUNTED)				
CIRCUIT NO.	DESCRIPTIONS	LOAD IN WATTS			MCB RATING (Ampere)	WIRE SIZE (mm ²)
		R	Y	B		
LIGHTING SECTION		ELCB RATING : 80A TPN 300 mA BUS BAR RATING : 100A TP				
R1	LIGHTS+FAN (FAMILY HALL,BEDROOM-1)	1100			10	1.5mm ²
Y1	LIGHTS+FAN (KITCHEN,EXTERNAL)		600		10	1.5mm ²
B1	LIGHTS+FAN (LOBBY,BATH-1,MAJLIS & STORE)			800	10	1.5mm ²
R2	LIGHTS+FAN (GARAGE,OUTSIDE&PORCH)	700			10	1.5mm ²
Y2	A/C AT BEDROOM - 1		2500		32	6.0mm ²
B2	A/C AT FAMILY HALL			2500	32	6.0mm ²
R3	A/C AT MAJLIS	2500			32	6.0mm ²
Y3	A/C AT KITCHEN			2000	32	6.0mm ²
B3	SPARE					
R4	SPARE					
Y4	SPARE					
B4	SPARE					
POWER SECTION		ELCB RATING : 63A TPN 30 mA BUS BAR RATING : 100A TP				
R5	SOCKET (KITCHEN) : 4 Nos	1600			32	2.5mm ²
Y5	SOCKET (FAMILY HALL & BEDROOM-1) : 7 Nos		2800		32	2.5mm ²
B5	SOCKET (MAJLIS & STORE) : 4 Nos			1600	32	2.5mm ²
R6	SPARE					
Y6	SPARE					
B6	SOCKET (GARAGE) : 2 Nos			800	32	2.5mm ²
R7	WATER HEATER	1500			20	2.5mm ²
Y7	WASHING MACHINE		400		32	2.5mm ²
B7	WATER PUMP			1000	20	2.5mm ²
R8	SPARE					
Y8	SPARE					
B8	SPARE					
TOTAL LOAD PER PHASE		7400	8300	6700		
MAIN SUPPLY		TYPE : ISOLATOR RATING : 100 TPN TOTAL LOAD = 22.40 KW. = 15.40 KVA				

DB-FIRST FLOOR		CABLE SIZES 4C 25mm ² XLPE/SWA/PVC				
BREAKING CAPACITY : 6 KA 230/400V 50HZ		TYPE : 4+4 WAY 100A TPN+E BUSBARS(FLUSH MOUNTED)				
CIRCUIT NO.	DESCRIPTIONS	LOAD IN WATTS			MCB RATING (Ampere)	WIRE SIZE (mm ²)
		R	Y	B		
LIGHTING SECTION		ELCB RATING : 80A TPN 300 mA BUS BAR RATING : 100A TP				
R1	LIGHTS+FAN (BEDROOM- 2 & BATH-3)	600			10	1.5mm ²
Y1	LIGHTS+FAN (HALL,ROOF DECK, BEDROOM-3 & LOBBY)		800		10	1.5mm ²
B1	LIGHTS+FAN (M.BEDROOM & BATH-2)			600	10	1.5mm ²
R2	SPARE					
Y2	SPARE					
B2	LIGHTS+FAN (STAIRCASE & ROOF)		500		10	1.5mm ²
R3	A/C AT BEDROOM - 2	2500			32	6.0mm ²
Y3	A/C AT HALL		2500		32	6.0mm ²
B3	A/C AT BEDROOM - 3			2500	32	6.0mm ²
R4	SPARE					
Y4	A/C AT M. BEDROOM		2500		32	6.0mm ²
B4	SPARE					
POWER SECTION		ELCB RATING : 80A TPN 300 mA BUS BAR RATING : 80A TPN 300 mA				
R5	SOCKET (M.BEDROOM,HALL & STAIRCASE) : 5 Nos	2000			32	2.5mm ²
Y5	SPARE					
B5	SOCKET (BEDROOM - 2 & BEDROOM - 3) : 6 Nos		2400		32	2.5mm ²
R6	WATER HEATER	1500			20	2.5mm ²
Y6	SPARE					
B6	WATER HEATER M,BED		1500		20	2.5mm ²
R7	SPARE					
Y7	SPARE					
B7	SPARE					
R8	SPARE					
Y8	SPARE					
B8	SPARE					
TOTAL LOAD PER PHASE		6600	7300	6000		
MAIN SUPPLY		TYPE : ISOLATOR RATING : 100 TPN TOTAL LOAD = 19.90 Kw = 15.07 KVA TOTAL LOAD = GROUND + FIRST FLOOR = 42.30 Kw = 30.47 KVA				

NOTES :
DISTRIBUTION BOARD SHOWN ON THIS DRAWING IS FOR GUIDE LINE, CONTRACTOR SHALL WORK OUT DISTRIBUTION BOARD & BALANCE LOAD PHASES AS PER SITE CONDITION & AS PER E.D. REQUIREMENT.

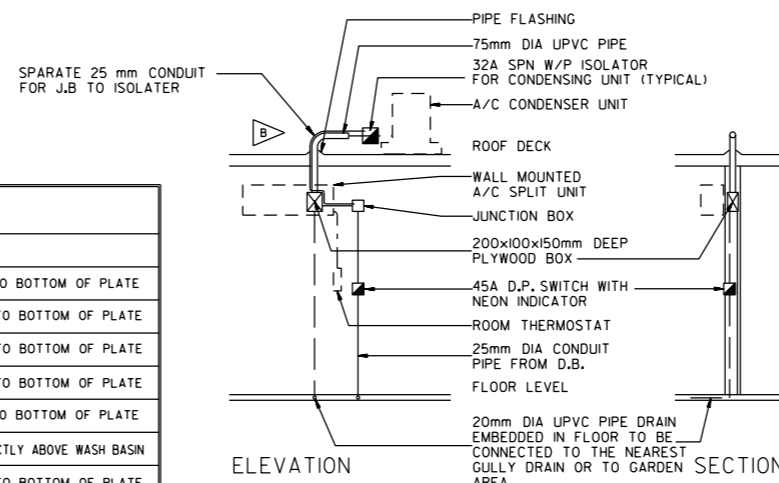


1 GROUND FLOOR - LIGHTING LAYOUT
77-02 SCALE 1:100

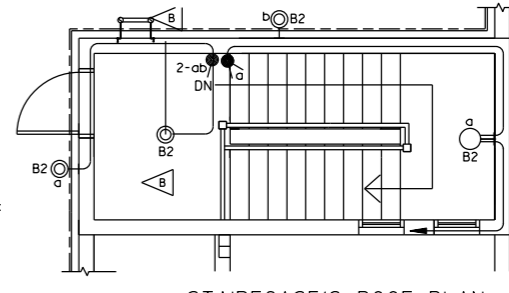


2 FIRST FLOOR - LIGHTING LAYOUT
77-02 SCALE 1:100

MOUNTING HEIGHT	
OUTLET	MOUNTING HEIGHT
13A SOCKET OUTLET	300mm FROM FFL TO BOTTOM OF PLATE
13A SOCKET OUTLET (HL)	1200mm FROM FFL TO BOTTOM OF PLATE
LIGHT / AC SWITCHES	1400mm FROM FFL TO BOTTOM OF PLATE
CONNECTION UNIT FOR WASHING M/C	1200mm FROM FFL TO BOTTOM OF PLATE
T.V AND TELEPHONE OUTLET	300mm FROM FFL TO BOTTOM OF PLATE
WALL MOUNTED LIGHT IN BATHROOM	2.0m+ FORM FFL DIRECTLY ABOVE WASH BASIN
FLEX OUTLET FOR WATER HEATER	1800mm FROM FFL TO BOTTOM OF PLATE
WASHING MACHINE	1400mm FROM FFL TO BOTTOM OF PLATE
LIGHT SWITCH AND FAN CONTROLLER	1600mm FROM FFL TO BOTTOM OF PLATE
AC AND WATER HEATER SWITCH IN KITCHEN	1400mm FROM FFL TO BOTTOM OF PLATE



4 SCHEMATIC DIAGRAM : SPLIT A/C UNIT
77-02 (WHERE EVER APPLICABLE) NOT TO SCALE



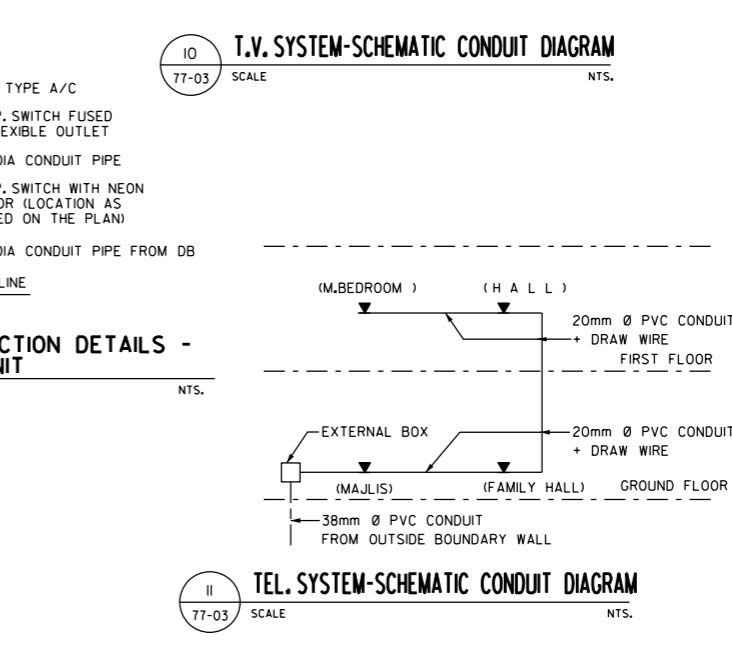
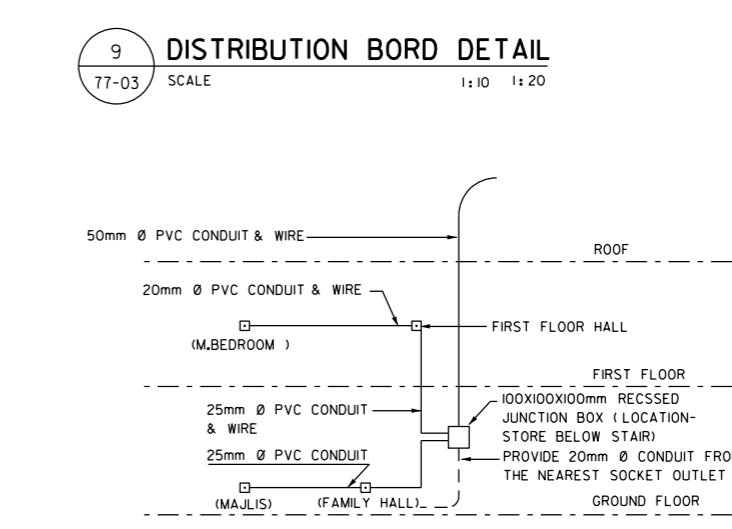
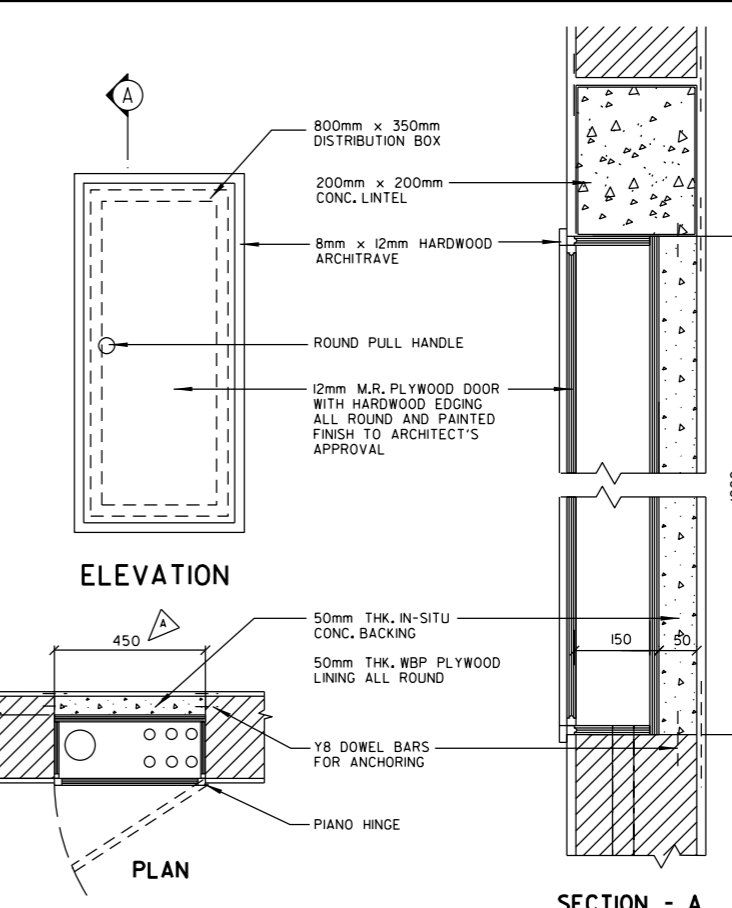
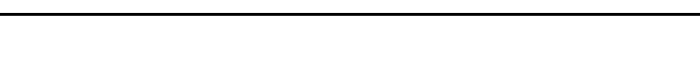
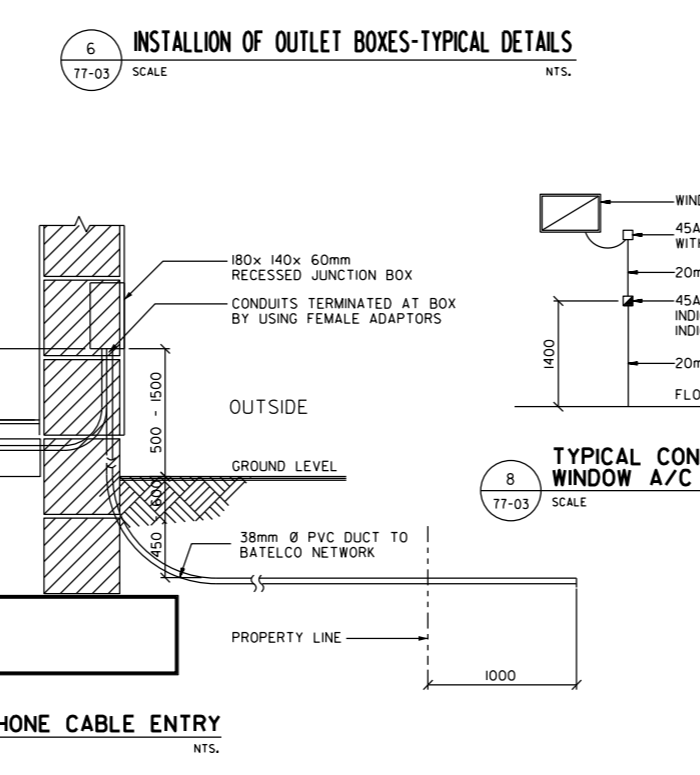
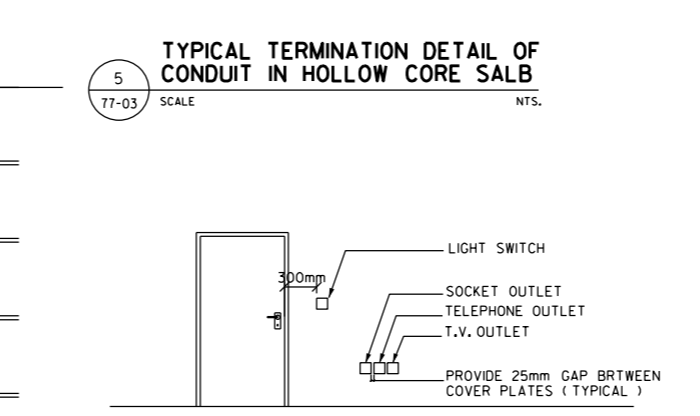
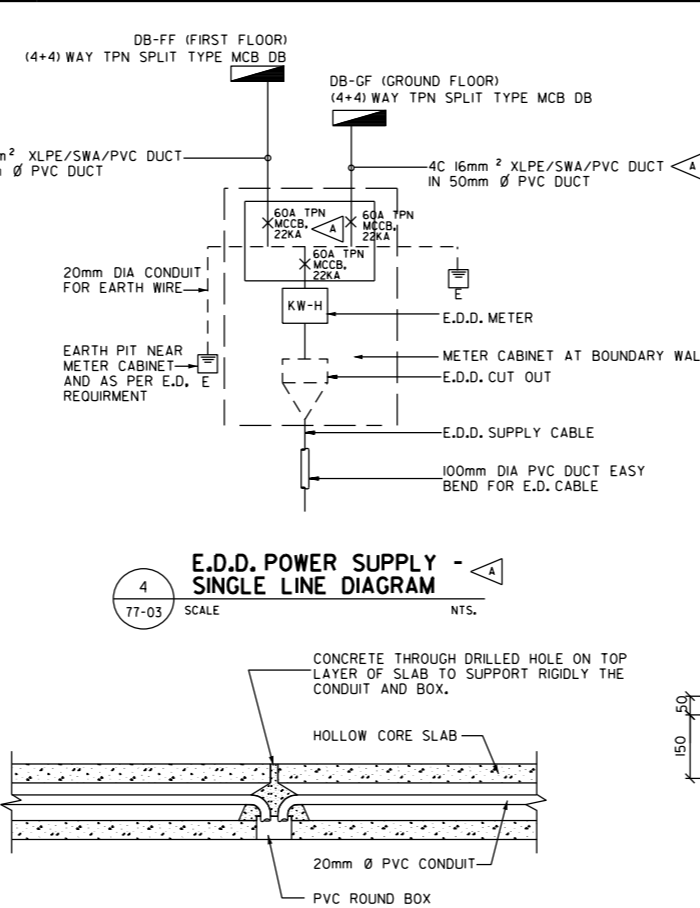
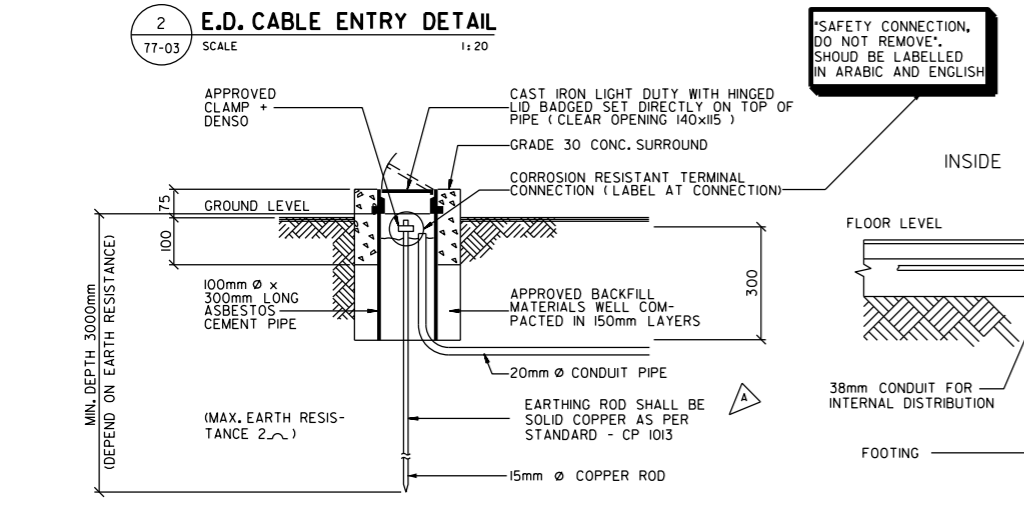
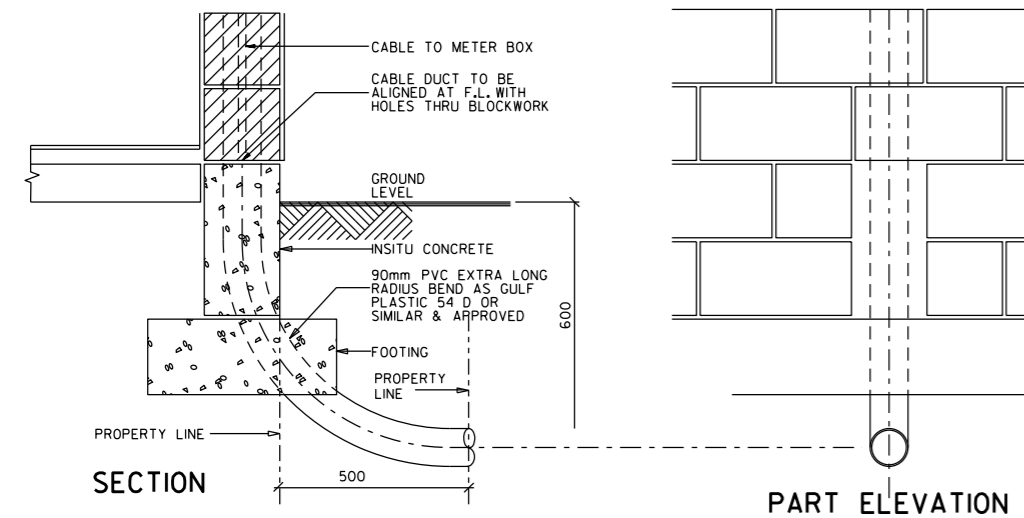
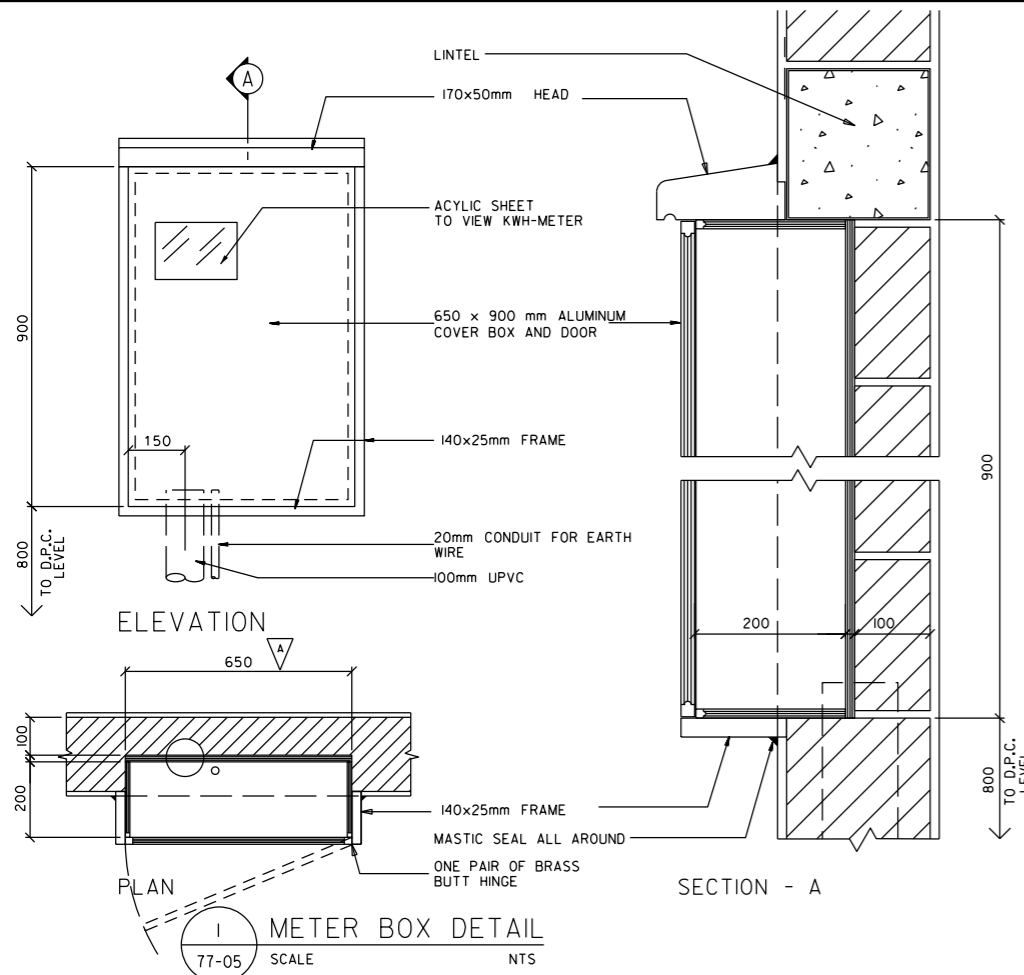
3 STAIRCASE'S ROOF PLAN LIGHTING LAYOUT
77-02 SCALE 1:100

NOTES

APP'D/DATE	REVISIONS
MAR.2015	RELOCATED INTERCOM
FEB. 2014	DECREASED OPENING AT FAMILY HALL AND ADDED 200x1000mm OPENING ON WALL. RELOCATED FAMILY HALL FAN & LIGHT. REVISED LOAD SHEET & REVISED SCHEMATIC DIAGRAM OF SPLIT A/C UNIT. RELOCATED STORE LIGHT SWITCH, WASHING MACHINE SWITCH & STORE DOOR
SEPT. 2012	REVISED AS SHOWN IN THE DRAWING
APRIL 2012	ISSUED FOR LUMP SUM CONTRACT

مملكة البحرين
 وزارة الإسكان
 KINGDOM OF BAHRAIN
 MINISTRY OF HOUSING

إدارة تخطيط وتصميم المشاريع السكنية
 HOUSING PROJECTS PLANNING & DESIGN DIRECTORATE
 PROJECT NAME: HOUSE TYPE T8
 DRAWING TITLE: LIGHTING-ELECTRICAL LAYOUT PLAN
 DESIGNED: HASSAN YASEEN
 CHECKED: HASSAN YASEEN
 DRAWN/CAD: ALI/AHMAD/GEORGE
 HEAD, ARCHITECTURAL DESIGN: NARMEEN KHALID AYOUB
 CHEF, DESIGN: رئيس التصميم
 ADEL BN RAJAB
 SCALE: 1:100
 DATE: APRIL, 2012
 DRAWING NUMBER: T8 - 77 - 02
 REVISION: C



- NOTES**
- THIS DRAWING IS ISSUED AS GUIDE LINE TO INDICATE THE STANDARD MOH REQUIREMENTS CONTRACTOR SHALL PREPARE HIS OWN SHOP DRAWINGS AND SUBMIT FOR MOH APPROVAL.
 - IT IS ESSENTIAL THAT THIS BEND IS OF A MINIMUM 450mm RADIUS.
 - THE BEND SHOULD BE INSTALLED TO LINE UP WITH THE CAVITIES IN THE BLOCKWORK BELOW METER BOX.
 - ENSURE THAT THIS CAVITIES IN BLOCKWORK ARE KEPT FREE FROM SURPLUS MORTAR.
 - WHERE PRECAST SLABS ARE USED ANY WIRING RUNNING IN SLAB IS TO BE FULLY CONDUITED AND PROPERLY GLANDED INTO BOXES OR FITTINGS.
 - WHERE BLOCKWORK IS TO BE BROKEN OUT FOR THE INSTALLATION OF BOXES ETC. CARE IS TO BE TAKEN TO ENSURE THAT THE MINIMUM BREAK-OUT COMMENSURATE WITH THE SIZE OF THE BOX IS CARRIED OUT.
 - LIGHT SWITCHES TO BE INSTALLED AT 1400mm TO BOTTOM OF PLATE FROM F.F.L.
 - 13AMP SOCKETS TO BE INSTALLED AS FOLLOWS:
LOW LEVEL 300mm TO BOTTOM OF HIGH LEVEL 1200mm TO BOTTOM OF PLATE FROM F.F.L.
 - DISTRIBUTION BOARD CIRCUITS SHALL BE LABELLED IN ENGLISH/ARABIC.
 - WIRE SHALL BE COLOUR CODED:
RED - PHASE A
YELLOW - PHASE B
BLUE - PHASE C
BLACK - NEUTRAL
GREEN - EARTH
 - WALL MOUNTED LIGHTS TO BE INSTALLED 2300mm FROM F.F.L. EXCEPT IN BATHROOM WHERE THE HEIGHT IS TO BE 2000mm FROM F.F.L. DIRECTLY OVER WASH HAND BASIN.
 - RING MAIN, A/C CIRCUIT AND WH CIRCUITS ARE TO BE INSTALLED IN FLOOR SLAB, FANS AND LIGHTING CIRCUIT CONDUIT TO RISE THROUGH BLOCKWORK TO CEILING LEVEL AND THEN THROUGH ROOF SLAB CONDUITS.
 - LIGHT BULBS TO BE PROVIDED ON ALL LIGHT FITTINGS.
 - THE 100mm DIA. E.D. EASY BEND MAY BE PVC (SUITABLE FOR UNDERGROUND INSTALLATION) OR ASBESTOS CEMENT.
 - SUPPLEMENTARY BONDINGS REQUIRED ON ALL EXPOSED METAL PARTS.
 - PHASE OF ELECTRICAL LOAD SHALL BE ROTATED IN EACH HOUSE TO BALANCE THE LOAD ON EACH E.D.D. FEEDER.
 - 25mm Ø CONDUIT SHALL BE PROVIDED FOR COOKER CIRCUIT AND T.V. POINTS, FOR ALL OTHER OUTLETS 20mm Ø CONDUITS SHALL BE PROVIDED.
 - DISTRIBUTION BOARD SHOWN ON THIS DRAWING IS FOR GUIDELINE. CONTRACTOR SHALL WORK DISTRIBUTION BOARD & BALANCED LOAD PHASES AS PER SITE CONDITION & REQUIREMENT
 - CONTRACTOR SHALL PROVIDE THE SPARE BREAKER AS INDICATED IN DB SCHEDULE
 - ALL ELECTRICAL UNIT WITH TOILET SHALL BE COORDINATED AND GET APPROVED BY SSE
 - CONTRACTOR SHALL BE RESPONSIBLE TO GET NECESSARY APPROVAL OF TELEPHONE SOCKET OUTLET FROM BATELCO

FEB-2014	METER BOX DETAIL CHANGE & REVISED E.D.D. POWER SUPPLY SINGLE LINE DIAGRAM & DISTRIBUTION BORD SIZE CHANGE
APRIL 2012	ISSUED FOR LUMP SUM CONTRACT
APP'D/DATE	REVISIONS



إدارة تخطيط وتصميم المشاريع السكنية
HOUSING PROJECTS PLANNING & DESIGN DIRECTORATE

PROJECT NAME: **HOUSE TYPE T8**
DRAWING TITLE: **STANDARD ELECTRICAL DETAILS & NOTES**

DESIGNED	المصمم	HASAN YASEEN	HEAD, ARCHITECTURAL DESIGN
CHECKED	المراجع	HASAN YASEEN	NARMEEN KHALID AYUB
DRAWN/CAD	الرسم	AL/GEORGE	ADDEL BIN RAJAB

SCALE: AS SHOWN
DRAWING NUMBER: **T8 - 77 - 03**